



INSTRUCTIONS 1008-H00 e

Section	1008
Effective	July 2007
Replaces	November 2005

Original instructions

P BI & P BF series with heating jacket

INSTALLATION

OPERATION

MAINTENANCE

BLACKMER
Z.I. Plaine des Isles
F- 89000 AUXERRE

Tel. : +33 (0)3.86.49.87.13
Fax : +33 (0)3.86.49.87.17
E-mail : contact@blackmer-mouvex.com

BLACKMER
1809 Century Avenue, Grand Rapids
MICHIGAN 49509-1595 - U.S.A.

Tél. : +1 (616) 241-1611 Fax : +1 (616) 241-3752
E-mail : blackmer@blackmer.com
Internet Address: www.blackmer.com

Your distributor :

1. TECHNICAL CHARACTERISTICS

1.1 TECHNICAL DATA

To avoid any liquid solidification in the pump, two heating jackets are located on each side of the body.

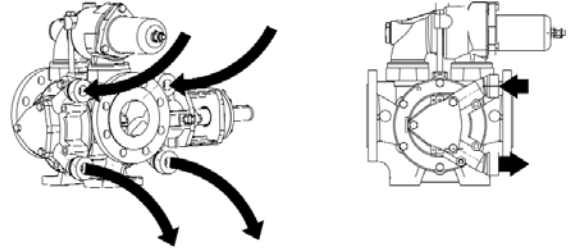
Heating jackets permits the circulation of steam or liquid up to 250°C and up to 12 bar (maximum pressure).

Jacket connections are 3/4" B.S.P.F for P15, P25, P40 and P60 or 1" B.S.P.F for P100.

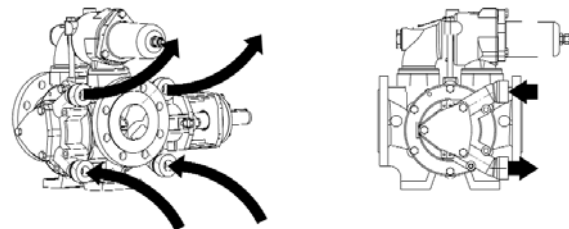
1.2 CONNECTION SYSTEM



The direction of the heating circuit connection to the jacket depends on the nature of the heating fluid :

- If using steam, the inlet will be on the upper opening and outlet will be on the lower opening (see the drawing).



- If using liquid, the inlet will be on the lower opening and outlet will be on the upper opening. (see the drawing).



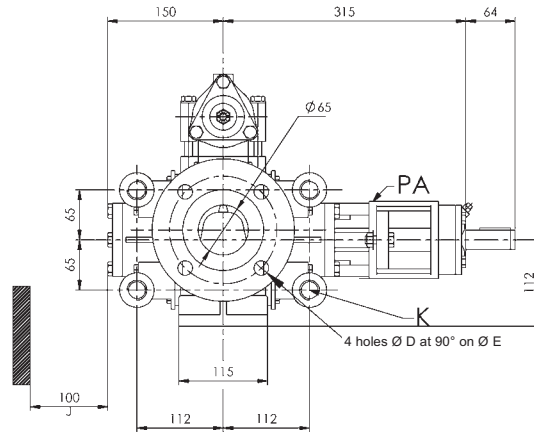
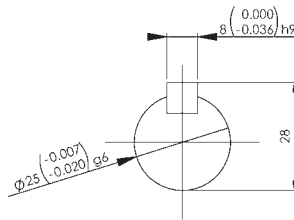
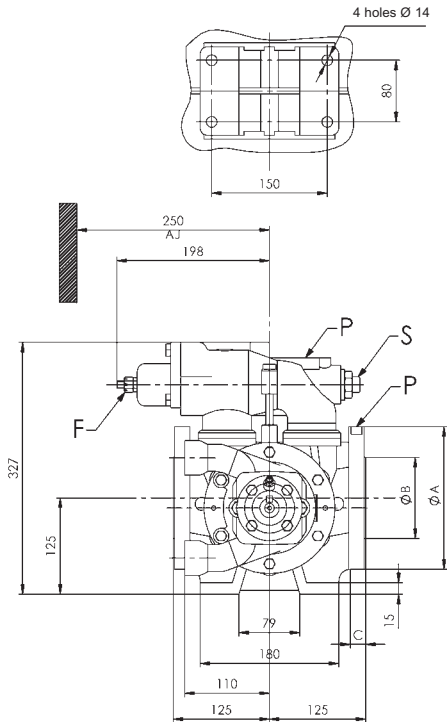
 WARNING

Hazardous pressure can cause personal injury or property damage.

BEFORE DRAINING THE HEATING JACKET, IT IS ESSENTIAL TO MAKE SURE THAT THE PUMP HEATING CIRCUIT AND HEATING JACKET ARE NO LONGER PRESSURIZED.

- Draining the product when hot could cause serious injuries or damage.

2. OVERALL DIMENSIONS

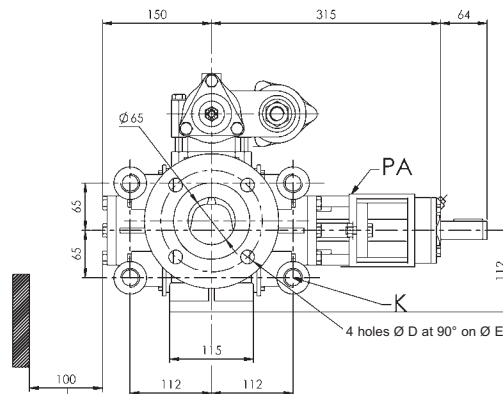
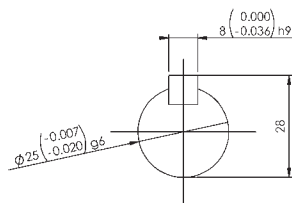
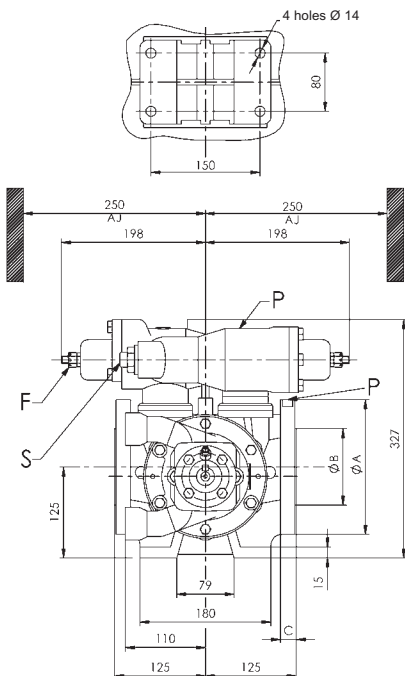
P15B
P25B
Single bypass



AJ	Space required for removing cap
F	Adjustment bypass
J	Space required for removing front cover
K	Port heating jacket G3/4"
P	Pump plate
PA	ATEX plate
S	Mounting point for probe M6 - threaded width : max. 8 mm

Material	A	B	C	D	E
Stainless steel	185	122	18	18	145
Steel	185	105	22	19	139,7

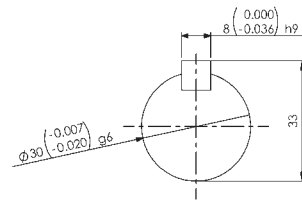
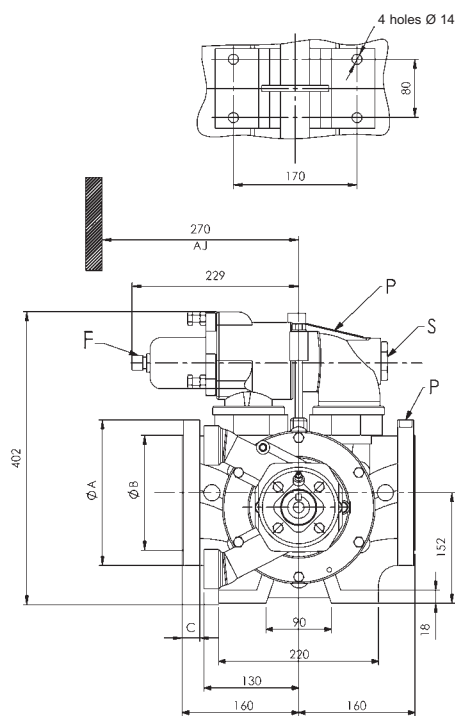
P15B
P25B
Double bypass



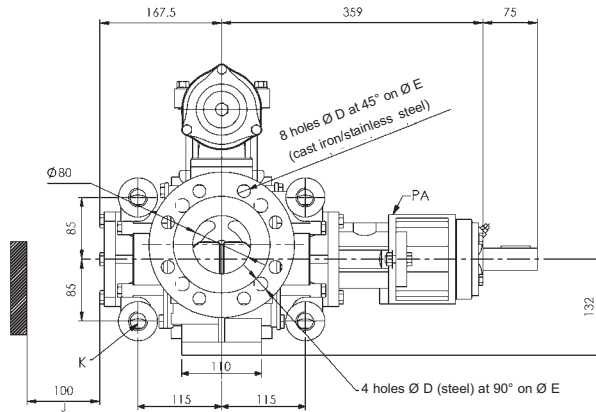
AJ	Space required for removing cap
F	Adjustment bypass
J	Space required for removing front cover
K	Port heating jacket G3/4"
P	Pump plate
PA	ATEX plate
S	Mounting point for probe M6 - threaded width : max. 8 mm 2 probes on double bypass : 1 on each plug

Material	A	B	C	D	E
Stainless steel	185	122	18	18	145
Steel	185	105	22	19	139,7

2. OVERALL DIMENSIONS (continued)

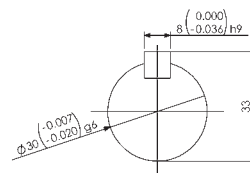
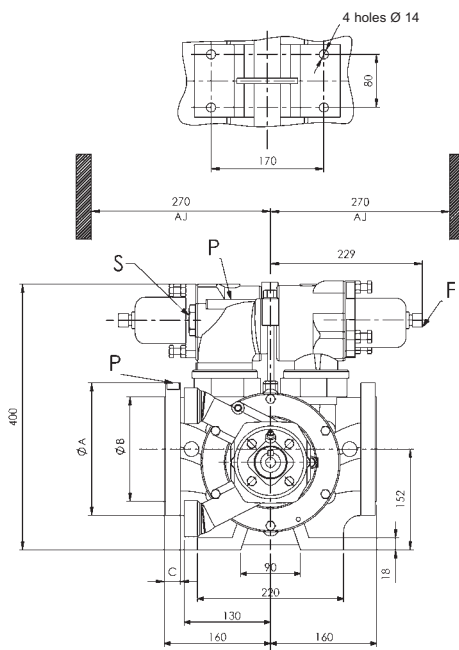


P40B
Single bypass

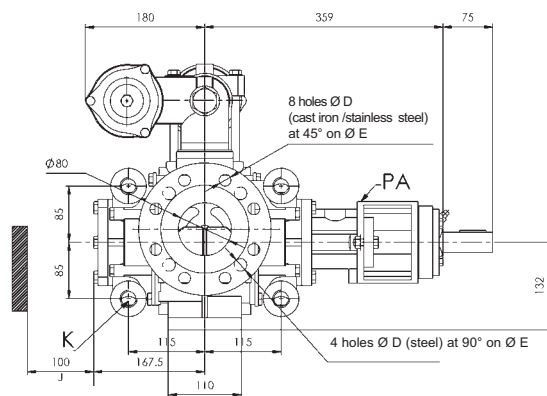


AJ	Space required for removing cap
F	Adjustment bypass
J	Space required for removing front cover
K	Port heating jacket G3/4"
P	Pump plate
PA	ATEX plate
S	Mounting point for probe M6 - threaded width : max. 8 mm

Material	A	B	C	D	E
Stainless steel	200	138	22	18	160
Steel	200	127	24	19	152,4



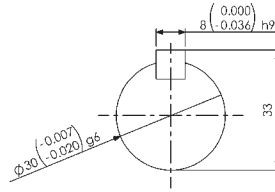
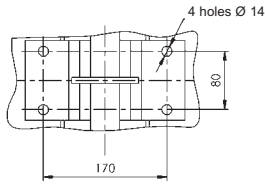
P40B
Double bypass



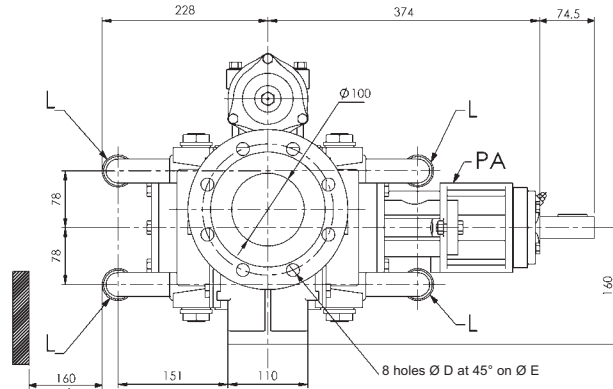
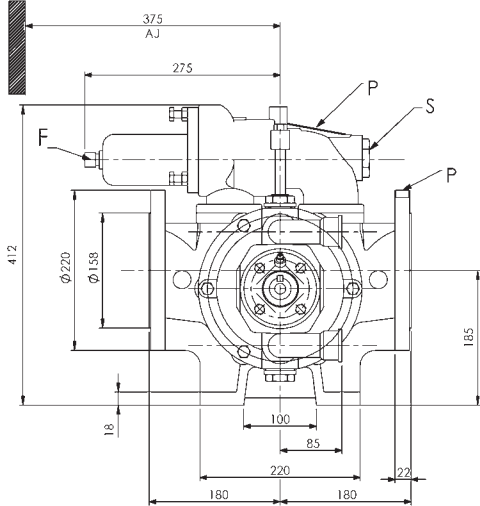
AJ	Space required for removing cap
F	Adjustment bypass
J	Space required for removing front cover
K	Port heating jacket G3/4"
P	Pump plate
PA	ATEX plate
S	Mounting point for probe M6 - threaded width : max. 8 mm 2 probes on double bypass : 1 on each plug

Material	A	B	C	D	E
Stainless steel	200	138	22	18	160
Steel	200	127	24	19	152,4

2. OVERALL DIMENSIONS (continued)

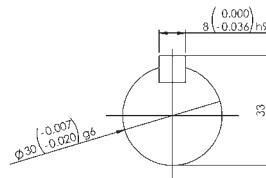
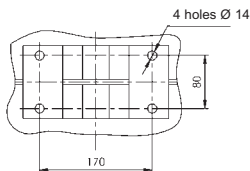


P60B
Single bypass

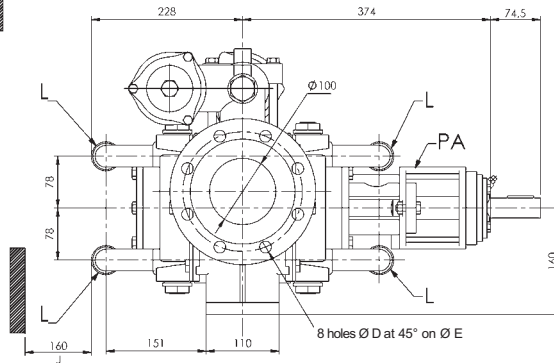
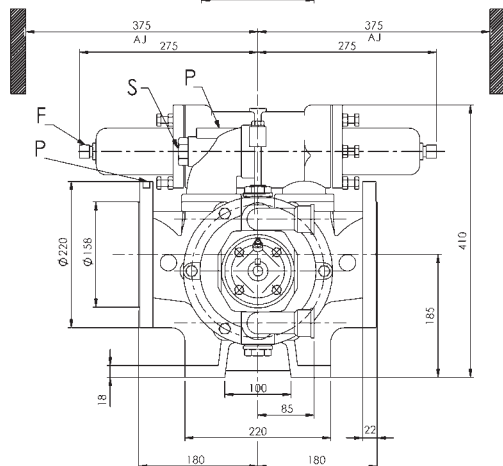


AJ	Space required for removing cap
F	Adjustment bypass
J	Space required for removing front cover
K	Port heating jacket G3/4"
P	Pump plate
PA	ATEX plate
S	Mounting point for probe M6 - threaded width : max. 8 mm

Material	A	B	C	D	E
Stainless steel	220	158	22	18	180
Steel	229	157	24	19	190,5



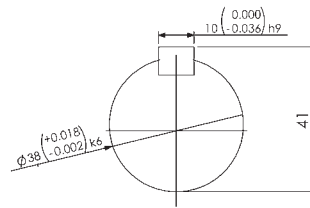
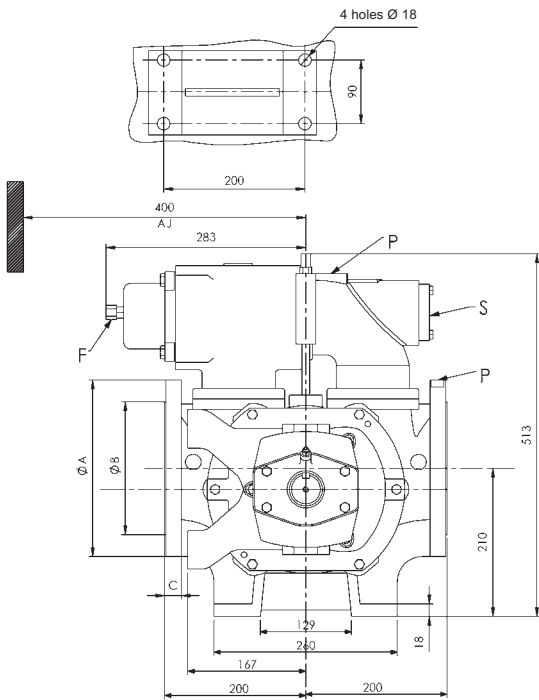
P60B
Double bypass



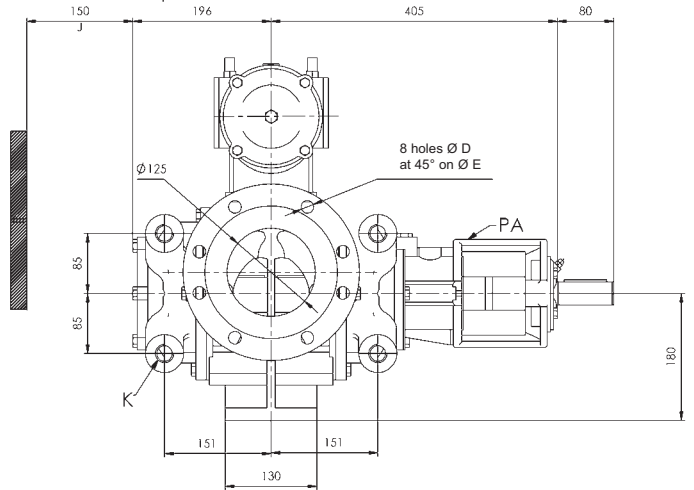
AJ	Space required for removing cap
F	Adjustment bypass
J	Space required for removing front cover
K	Port heating jacket G3/4"
P	Pump plate
PA	ATEX plate
S	Mounting point for probe M6 - threaded width : max. 8 mm 2 probes on double bypass : 1 on each plug

Material	A	B	C	D	E
Stainless steel	220	158	22	18	180
Steel	229	157	24	19	190,5

2. OVERALL DIMENSIONS (continued)

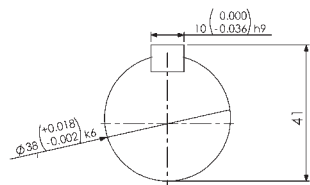
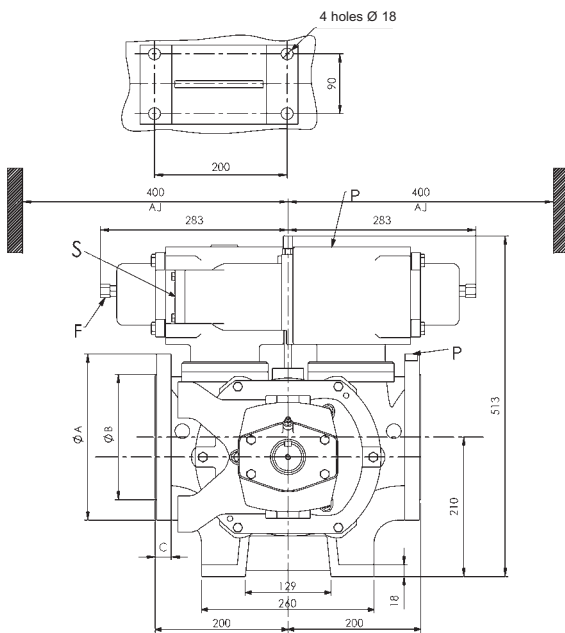


P100B
Single bypass

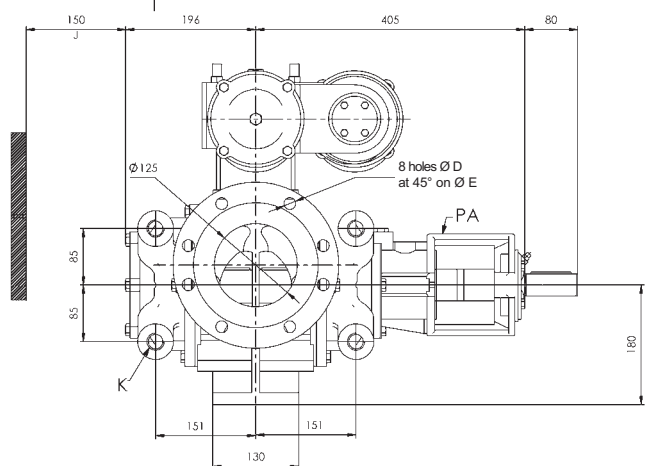


AJ	Space required for removing cap
F	Adjustment bypass
J	Space required for removing front cover
K	Port heating jacket G1"
P	Pump plate
PA	ATEX plate
S	Mounting point for probe M6 - threaded width : max. 8 mm

Material	A	B	C	D	E
Stainless steel	250	188	24	18	210
Steel	254	186	24	22,2	215,9



P100B
Double bypass



AJ	Space required for removing cap
F	Adjustment bypass
J	Space required for removing front cover
K	Port heating jacket G1"
P	Pump plate
PA	ATEX plate
S	Mounting point for probe M6 - threaded width : max. 8 mm 2 probes on double bypass : 1 on each plug

Material	A	B	C	D	E
Stainless steel	250	188	24	18	210
Steel	254	186	24	22,2	215,9