



**INSTRUCTIONS 1008-H00 e**

Section	1008
Effective	July 2007
Replaces	November 2005

Original instructions

# ***P BA serie with heating jacket***

**INSTALLATION**

**OPERATION**

**MAINTENANCE**

**BLACKMER**  
Z.I. Plaine des Isles  
F- 89000 AUXERRE

Tel. : +33 (0)3.86.49.87.13  
Fax : +33 (0)3.86.49.87.17  
E-mail : [contact@blackmer-mouvex.com](mailto:contact@blackmer-mouvex.com)

**BLACKMER**  
1809 Century Avenue, Grand Rapids  
MICHIGAN 49509-1595 - U.S.A.

Tél. : +1 (616) 241-1611 Fax : +1 (616) 241-3752  
E-mail : [blackmer@blackmer.com](mailto:blackmer@blackmer.com)  
Internet Address: [www.blackmer.com](http://www.blackmer.com)

**Your distributor :**

# 1. TECHNICAL CHARACTERISTICS

## 1.1 TECHNICAL DATA

To avoid any liquid solidification in the pump, two heating jackets are located on each side of the body.

Heating jackets permits the circulation of steam or liquid up to 250°C and up to 12 bar (maximum pressure).

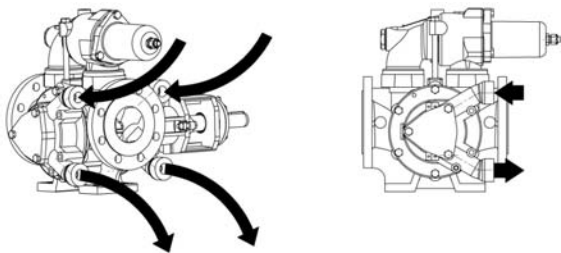
Jacket connections are 3/4" B.S.P.F for P15, P25, P40 and P60 or 1" B.S.P.F for P100.

## 1.2 CONNECTION SYSTEM

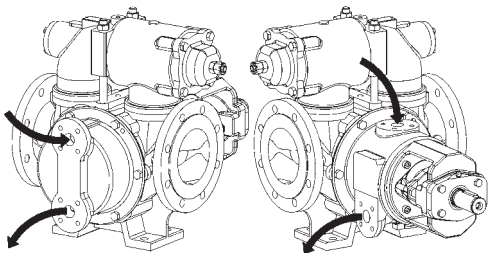
The direction of the heating circuit connection to the jacket depends on the nature of the heating fluid :

- If using steam, the inlet will be on the upper opening and outlet will be on the lower opening (see the drawing).

- P15 ; P25

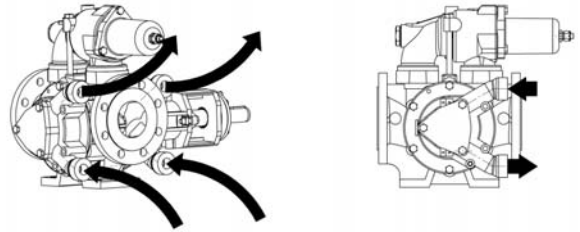


- P40 ; P60 ; P100

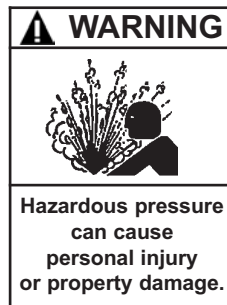
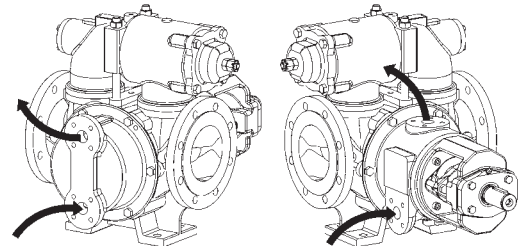


- If using liquid, the inlet will be on the lower opening and outlet will be on the upper opening. (see the drawing).

- P15 ; P25



- P40 ; P60 ; P100



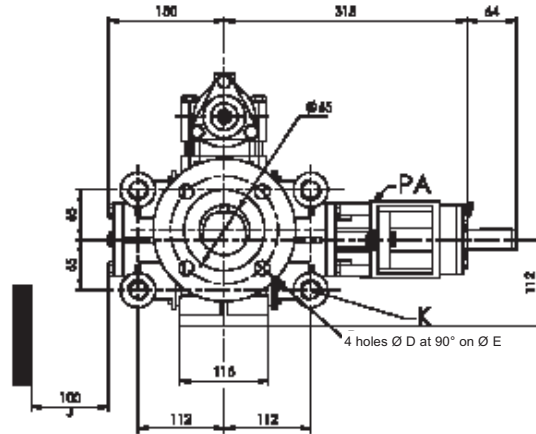
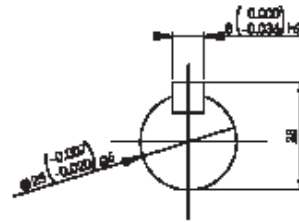
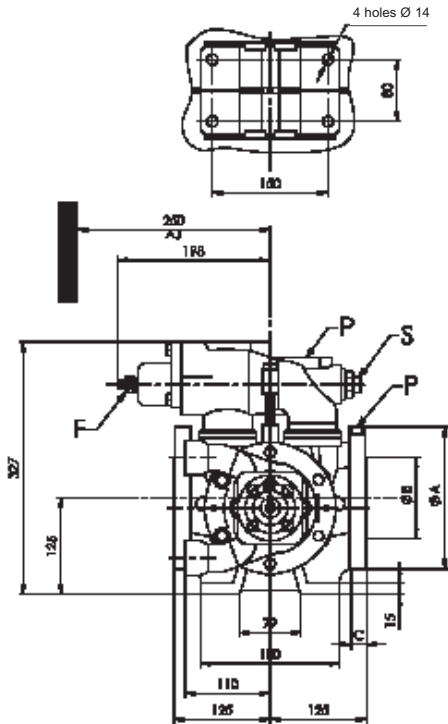
Hazardous pressure  
can cause  
personal injury  
or property damage.

**BEFORE DRAINING THE HEATING JACKET, IT IS ESSENTIAL TO MAKE SURE THAT THE PUMP HEATING CIRCUIT AND HEATING JACKET ARE NO LONGER PRESSURIZED.**

- Draining the product when hot could cause serious injuries or damage.

## 2. OVERALL DIMENSIONS

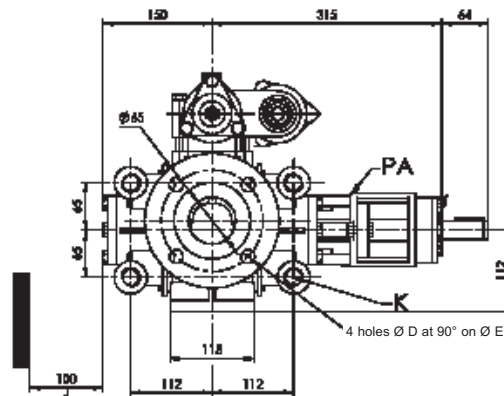
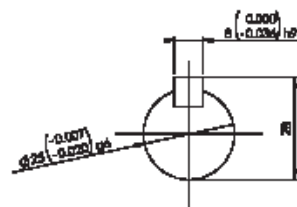
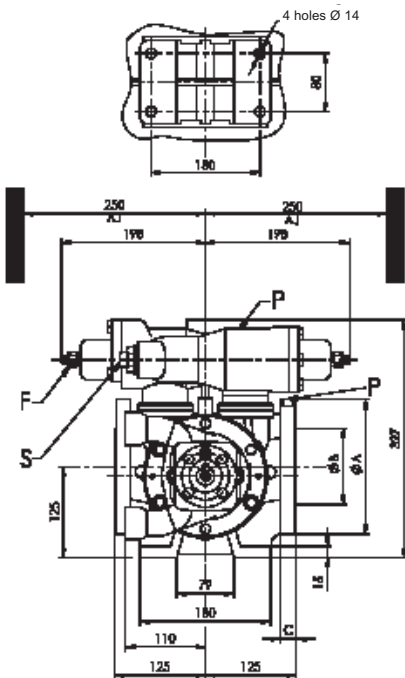
P15B  
P25B  
Single bypass



AJ	Space required for removing cap
F	Adjustment bypass
J	Space required for removing front cover
K	Port heating jacket G3/4"
P	Pump plate
PA	ATEX plate
S	Mounting point for probe M6 - threaded width : max. 8 mm

Material	A	B	C	D	E
Steel	185	105	22	19	139,7

P15B  
P25B  
Double bypass

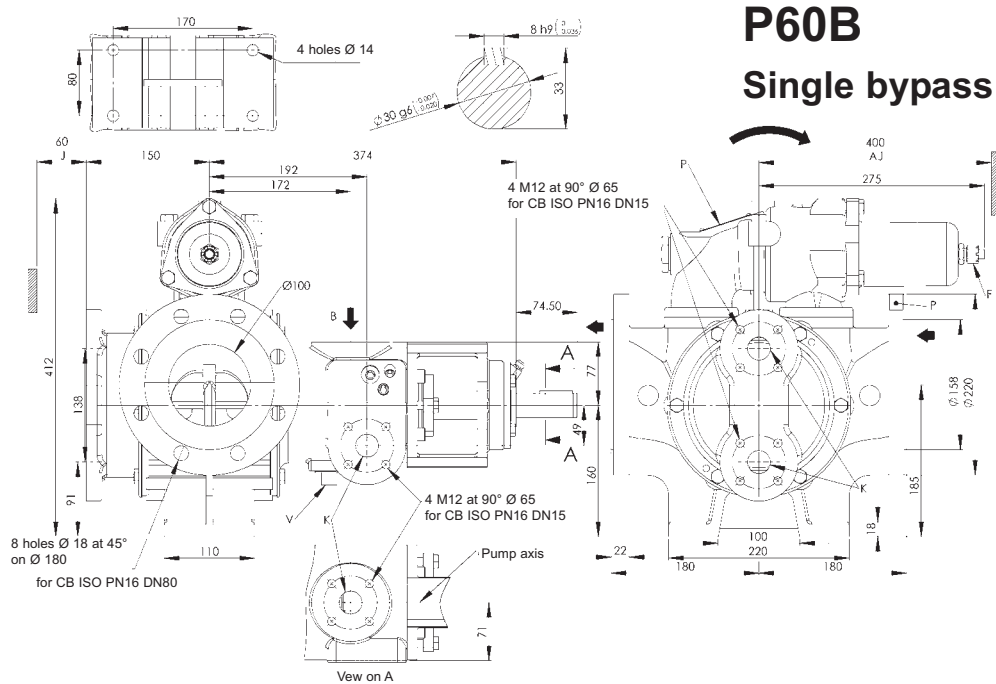


AJ	Space required for removing cap
F	Adjustment bypass
J	Space required for removing front cover
K	Port heating jacket G3/4"
P	Pump plate
PA	ATEX plate
S	Mounting point for probe M6 - threaded width : max. 8 mm 2 probes on double bypass : 1 on each plug

Material	A	B	C	D	E
Steel	185	105	22	19	139,7

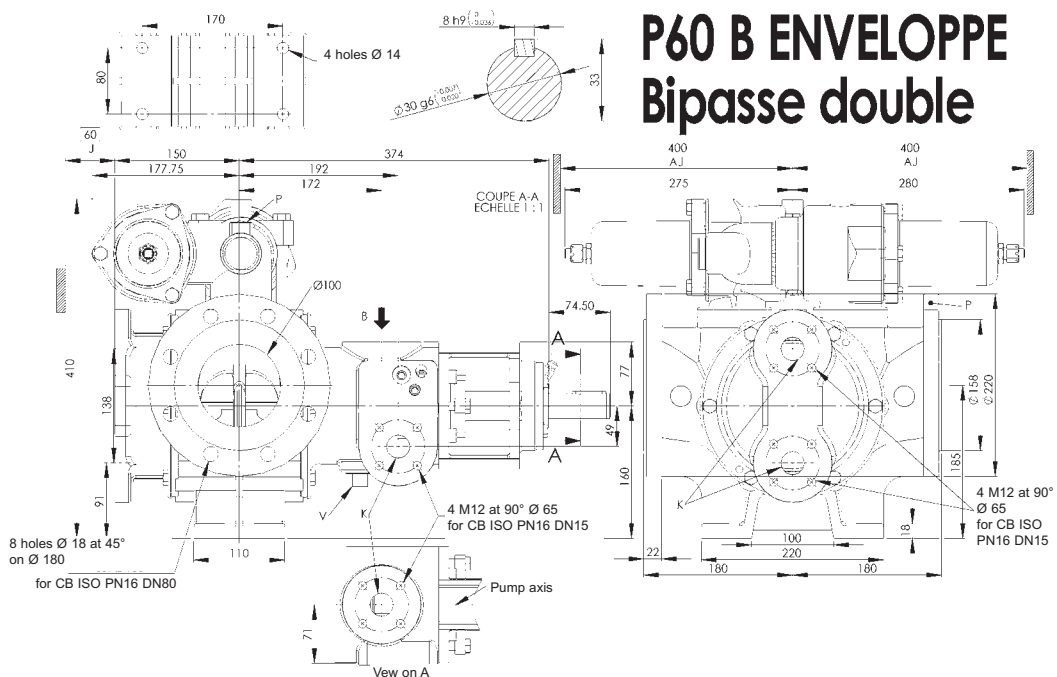


## 2. OVERALL DIMENSIONS (continued)



**P60B**  
**Single bypass**

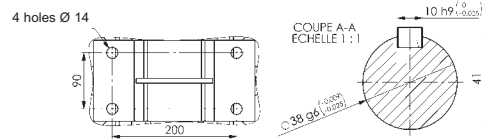
AJ	Space required for removing cap
F	Adjustment bypass
J	Space required for removing front cover
K	Port heating jacket
P	Pump plate
V	Draining of the heating jacket



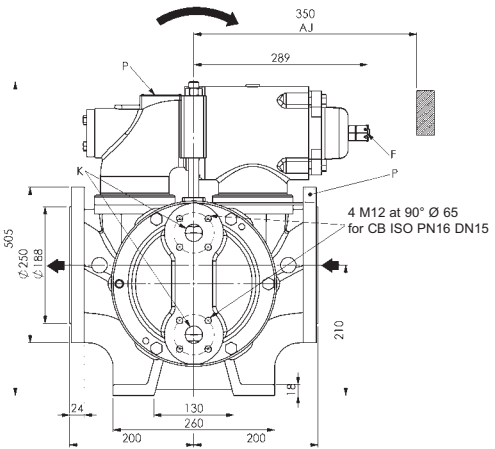
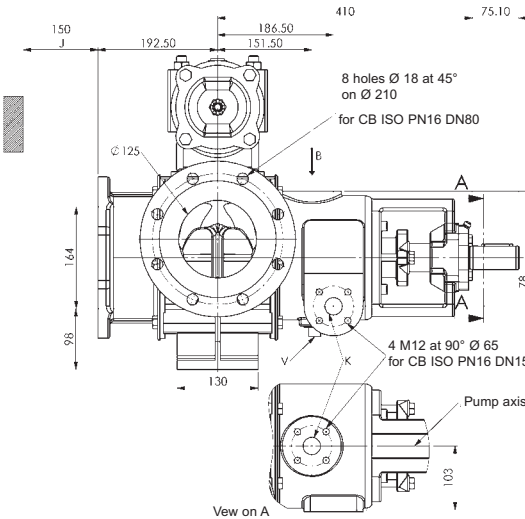
**P60 B ENVELOPPE**  
**Bipasse double**

AJ	Space required for removing cap
F	Adjustment bypass
J	Space required for removing front cover
K	Port heating jacket
P	Pump plate
V	Draining of the heating jacket

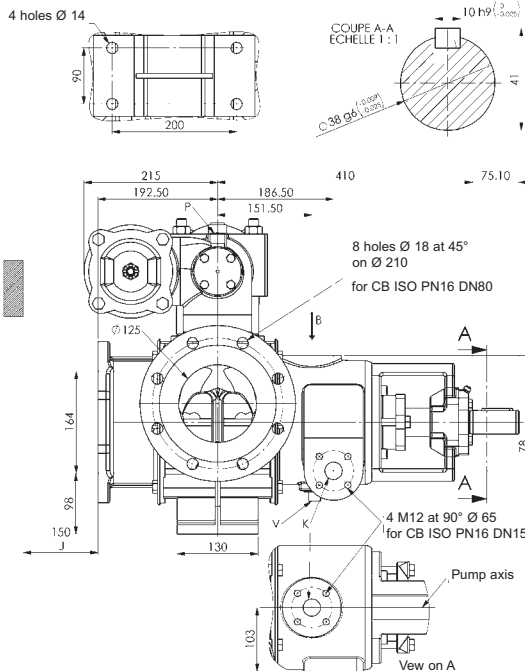
## 2. OVERALL DIMENSIONS (continued)



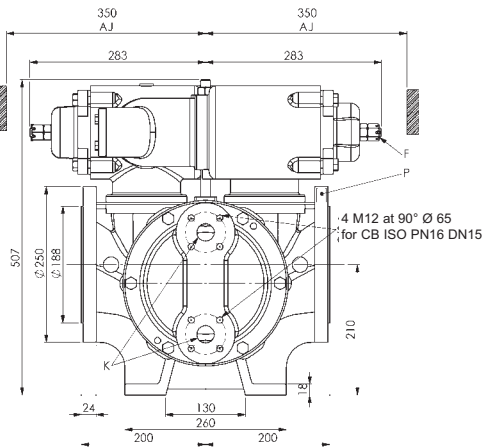
### P100B Single bypass



AJ	Space required for removing cap
F	Adjustment bypass
J	Space required for removing front cover
K	Port heating jacket
P	Pump plate
V	Draining of the heating jacket



### P100B Double bypass



AJ	Space required for removing cap
F	Adjustment bypass
J	Space required for removing front cover
K	Port heating jacket
P	Pump plate
V	Draining of the heating jacket