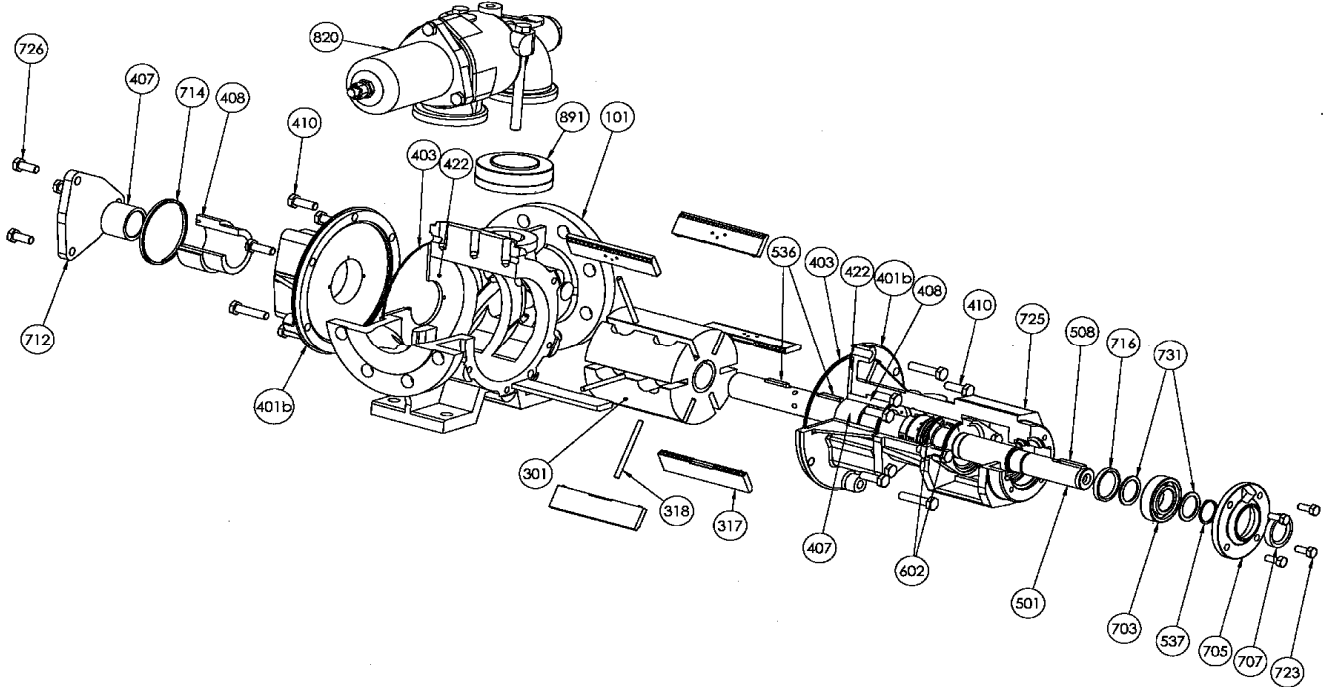
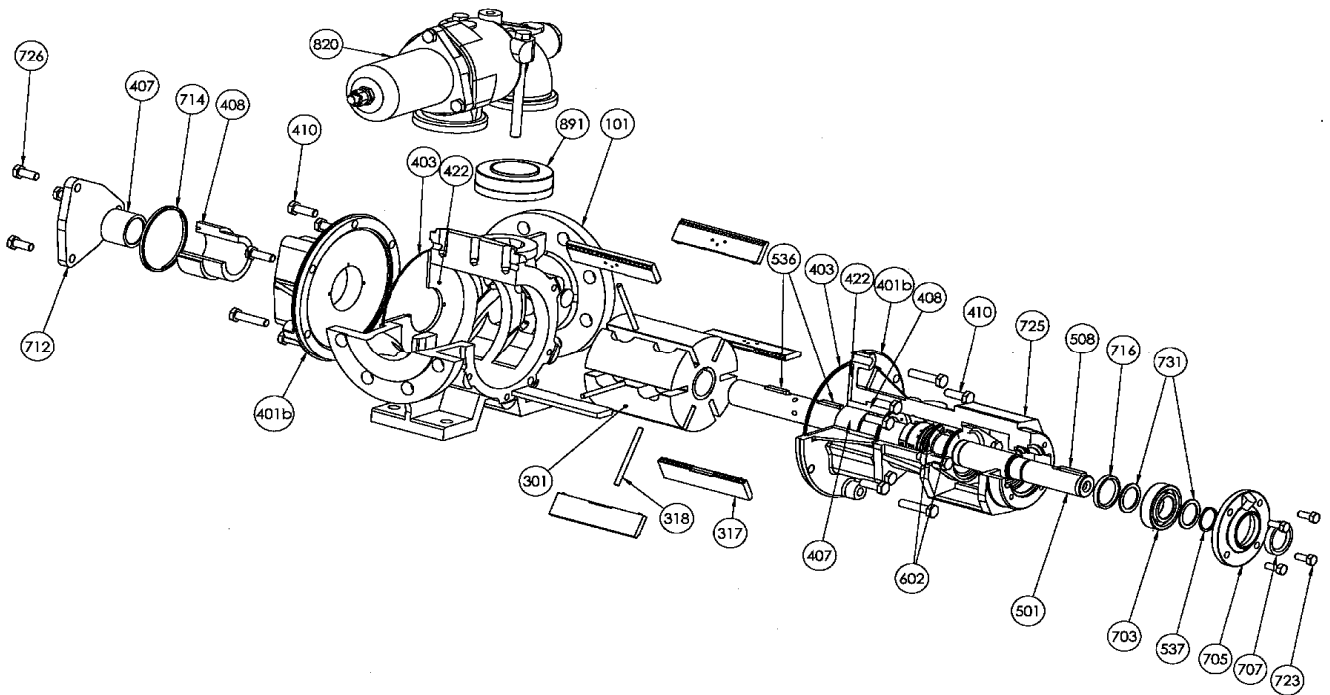


(See Instructions **1008-D00** for Installation, Operation and Maintenance)

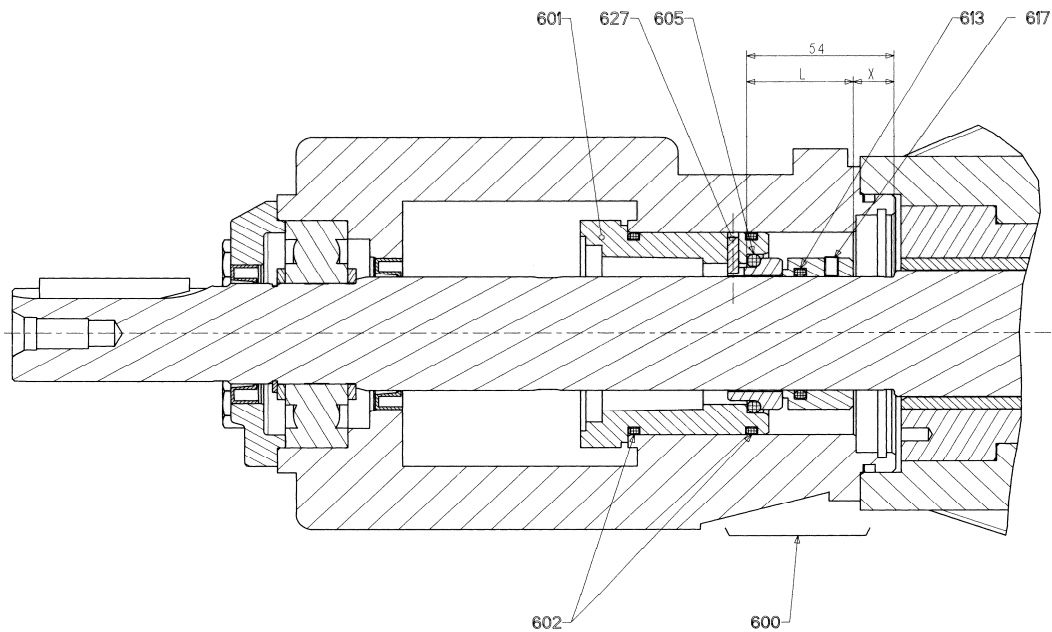
Section	1008
Effective	June 2010
Replaces	March 2010



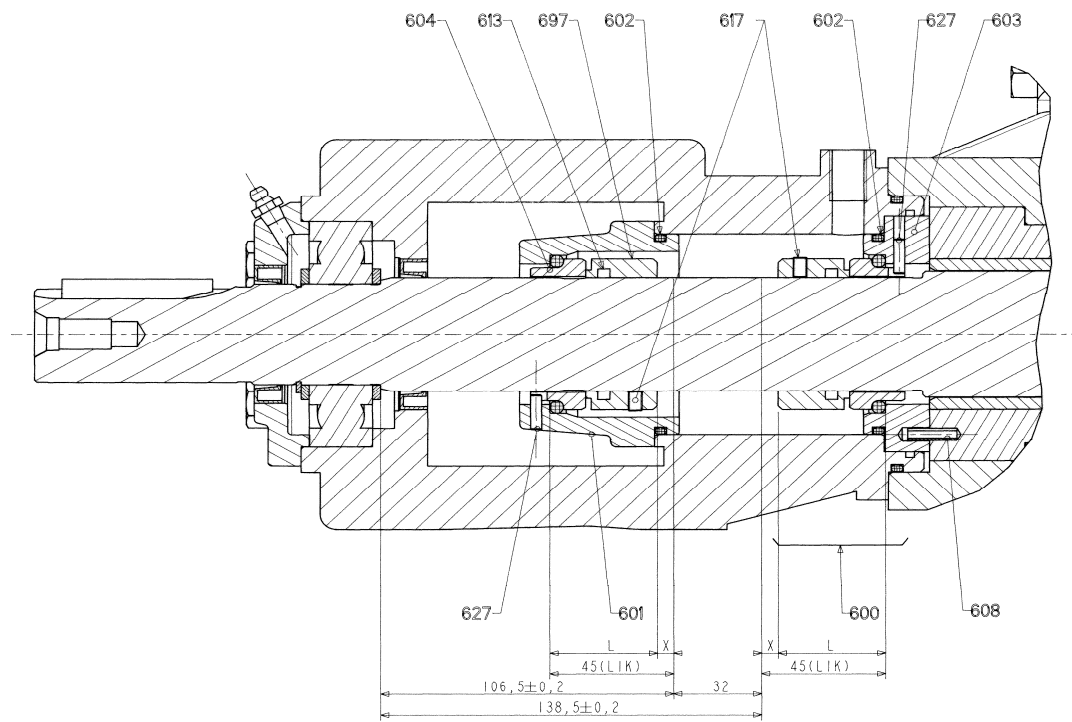
Reference			Description	Quantity		Article code	Wear parts
Ass.	Part	Available		In Pump	In set	P100 BI	
98		◆	Full set of pump screws	1		310449.00	
98		◆	Full set of jacketed pump screws	1		310450.00	
	410		Screw		(8)		
	411		Screw		(4)		
	723		Screw		(4)		
	726		Screw		(6)		
	729		Screw		(2)		
	730		Nut		(2)		
99		◆	Set of pump seals - FKM	1		307814.00	•
99		◆	Set of pump seals - CVT	1		312460.01	•
99		◆	Set of pump seals - FKM HT	1		307815.00	•
	403		Seal		(2)		
	602		Seal		(2)		
	707		Lip seal		(1)		
	714		Cover seal		(1)		
	716		Lip seal		(1)		
	727		Outboard bearing seal		(1)		
	101	▲	Body	1		215164	
	301	▲	Rotor	1		215165	
309		◆	Set of 12 vanes TVP	1		307819.00	•
309		◆	Set of 12 vanes TVP TR	1		307820.00	•
	317		Vane		12		
325		◆	Set of 6 pushrods	1		307607.00	•
	318		Pushrod		6		



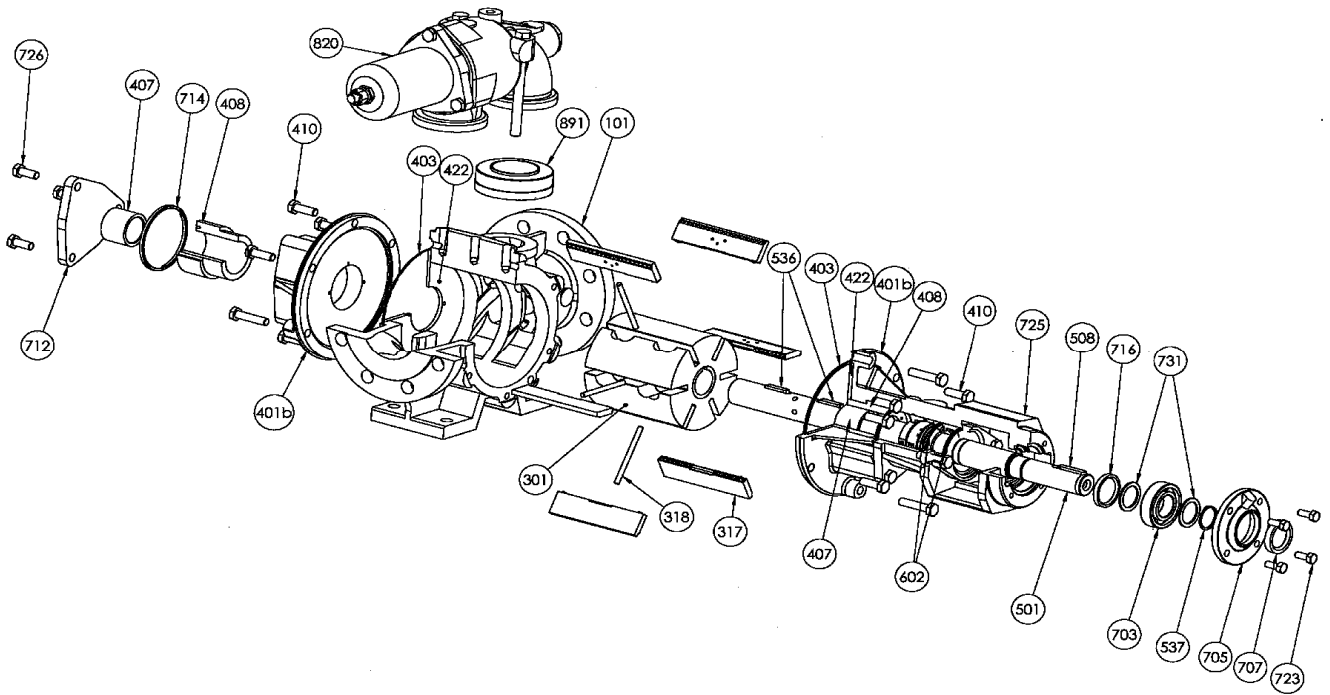
Reference			Description	Quantity		Article code	Wear parts
Ass.	Part	Available		In Pump	In set	P100 BI	
400		◆	<b>COMPLETE FRONT COVER FOR STANDARD PUMP :</b>				
		◆	Standard version	2		310454.00	•
400		◆	Standard version - Enlarged clearance	2		314057.00	•
400		◆	HT version	2		314507.00	•
400		◆	HT version - Enlarged clearance	2		314508.00	•
			<b>COMPLETE FRONT COVER FOR JACKETED PUMP :</b>				
400		◆	Standard version	2		310455.00	•
400		◆	Standard version - Enlarged clearance	2		314059.00	•
400		◆	HT version	2		314505.00	•
400		◆	HT version - Enlarged clearance	2		314506.00	•
	401		Front cover		(1)		
	410		Screw		(4)		
	411		Screw		(2)		
	419		Bushing set		(1)		
409		◆	Set of front cover o-rings - FKM	1		304442.00	•
409		◆	Set of front cover o-rings - CVT	1		313797.00	•
409	403	◆	Set of front cover o-rings - FKM HT	1		305581.01	•
			Seal		(2)		
420		◆	Set of carbon bushings - Standard version	1		314087.00	•
420		◆	Set of carbon bushings - Standard version - Enlarged clearance	1		314088.00	•
420		◆	Set of carbon bushings - HT version	1		314538.00	•
420	419	◆	Set of carbon bushings - HT version - Enlarged clearance	1		314539.00	•
			Bushing set		(2)		
424		◆	Set of carbon discs - Standard version	1		310243.00	•
424	422	◆	Set of carbon discs - HT version	1		314544.00	•
			Front cover disc		(2)		
500		◆	Shaft complete for pump without pushrods	1		310460.00	
500		◆	Shaft complete for pump with pushrods	1		310461.00	
	501		Shaft		(1)		
	599		Set of keys		(1)		
599		◆	Set of keys - Pump without pushrods	1		310521.00	
599		◆	Set of keys - Pump with pushrods	1		310522.00	
	508		Key		(1)		
	536		Key (Qty : 2 for pump with pushrods)		(1)		
	537		Circlip		(1)		



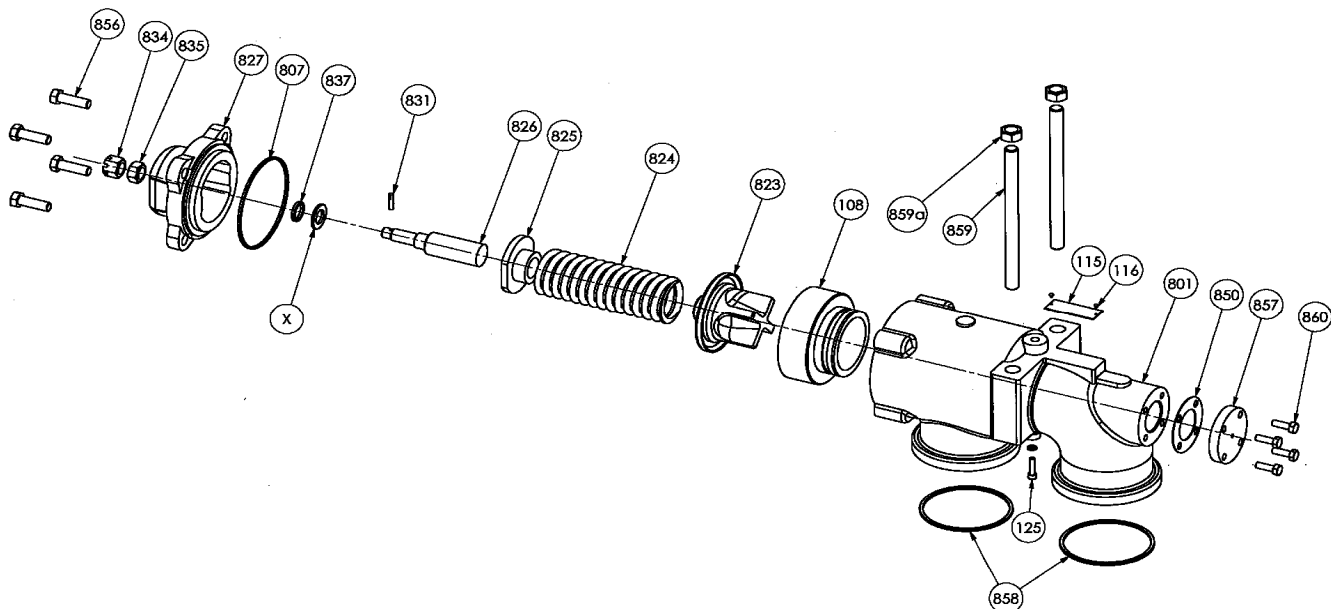
Reference			Description	Quantity		Article code	Wear parts
Ass.	Part	Available		In Pump	In set	P100 BI	
609		◆	PGSN Shaftseal holder complete - FKM	1		310463.00	
609		◆	PGSN Shaftseal holder complete - CVT	1		310465.00	
609		◆	PGSN Shaftseal holder complete - FKM HT	1		310464.00	
	601		Shaftseal holder		(1)		
	602		Seal		(2)		
	627		Pin		(1)		
	729		Screw		(2)		
	730		Nut		(2)		



Reference			Description	Quantity		Article code	Wear parts
Ass.	Part	Available		In Pump	In set	P100 BI	
609		◆	PGDN Shaftseal holder complete - FKM	1		310467.00	
609		◆	PGDN Shaftseal holder complete - CVT	1		310469.00	
609		◆	PGDN Shaftseal holder complete - FKM HT	1		310468.00	
	601		Shaftseal holder		(1)		
	602		Seal		(1)		
	603		Shaftseal seat		(1)		
	608		Pin		(1)		
	621		Seal		(1)		
	627		Pin		(2)		
	729		Screw		(2)		
	730		Nut		(2)		

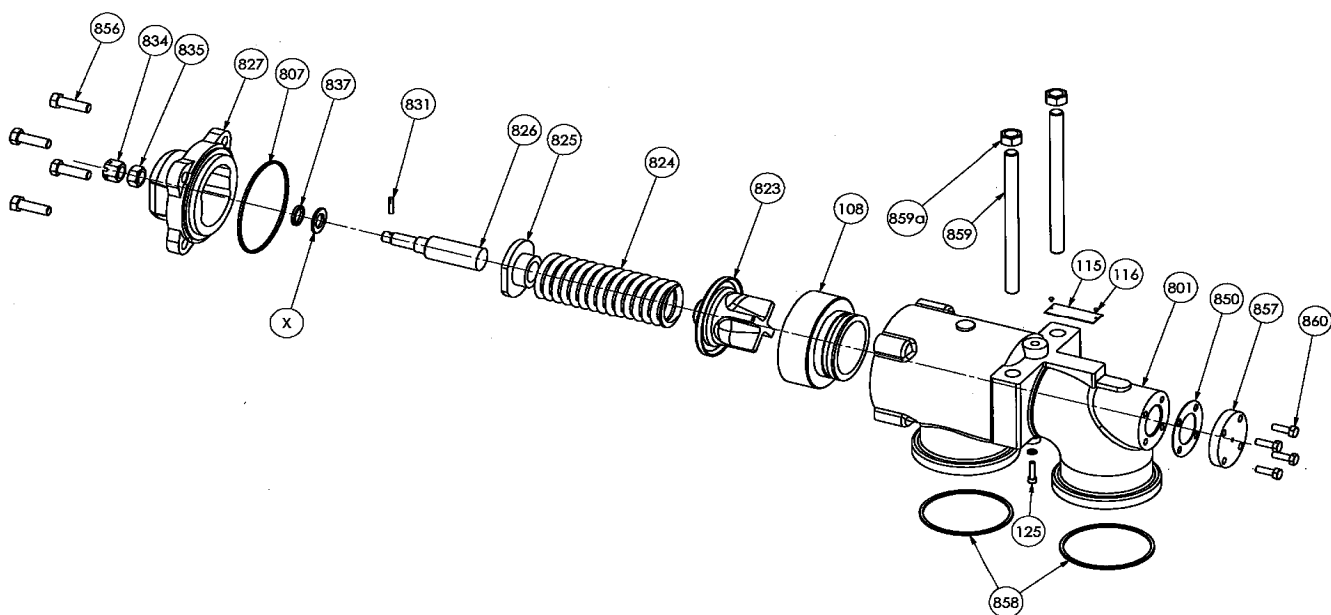


Reference			Description	Quantity		Article code	Wear parts
Ass.	Part	Available		In Pump	In set	P100 BI	
640		◆	<b>Reservoir grease complete</b>	1		310496.00	
	643		Snifter valve		(1)		
	644		Grease nipple		(1)		
	645		Cover		(1)		
	646		Seal		(1)		
	647		Lip seal		(1)		
700		◆	<b>Complete frond cover cover - FKM</b>	1		310478.00	
700		◆	<b>Complete frond cover cover - CVT</b>	1		310480.00	
700		◆	<b>Complete frond cover cover - FKM HT</b>	1		310479.00	
	712		Front cover cover		(1)		
	714		Cover seal		(1)		
	726A		Screw		(3)		
704		◆	<b>Ball bearing kit</b>	1		310495.00	
	537		Circlip		(1)		
	703		Ball bearing		(1)		
	731		Roller bearing support washer		(2)		
715		◆	<b>Set of seals + diverse for outboard bearing - FKM</b>	1		310483.00	
715		◆	<b>Set of seals + diverse for outboard bearing - CVT</b>	1		314070.00	
715		◆	<b>Set of seals + diverse for outboard bearing - FKM HT</b>	1		310484.00	
	537		Circlip		(1)		
	602		Seal		(2)		
	608		Pin		(1)		
	627		Pin		(2)		
	646		Seal		(1)		
	647		Lip seal		(1)		
	707		Lip seal		(1)		
	716		Lip seal		(1)		
	727		Outboard bearing seal		(1)		
720		◆	<b>FOR PUMP WITH PGSN MECHANICAL SEAL :</b>				
		◆	<b>Outboard bearing, complete - FKM</b>	1		310487.00	
		◆	<b>Outboard bearing, complete - CVT</b>	1		310489.00	
		◆	<b>Outboard bearing, complete - FKM HT</b>	1		310488.00	
720		◆	<b>FOR PUMP WITH PGDN MECHANICAL SEAL :</b>				
		◆	<b>Outboard bearing, complete - FKM</b>	1		310491.00	
		◆	<b>Outboard bearing, complete - CVT</b>	1		310493.00	
		◆	<b>Outboard bearing, complete - FKM HT</b>	1		310492.00	
	703		Ball bearing		(1)		
	716		Lip seal		(1)		
	725		Outboard bearing		(1)		
	726		Screw		(3)		
	727		Outboard bearing seal		(1)		
	731		Roller bearing support washer		(2)		
740		◆	<b>Cover complete</b>	1		310497.00	
	705		Bearing cover		(1)		
	707		Lip seal		(1)		
	723		Screw		(4)		



Reference			Description	Quantity		Article code	Wear parts
Ass.	Part	Available		In Pump	In set	P100 BI	
			<b>SINGLE BYPASS, COMPLETE :</b>				
820		◆	Spring 3/6 bar - FKM	1		310498.01	
820		◆	Spring 3/6 bar - CVT	1		310500.01	
820		◆	Spring 3/6 bar - FKM HT	1		310499.01	
820		◆	Spring 7/12 bar - FKM	1		314235.02	
820		◆	Spring 7/12 bar - CVT	1		314239.02	
820		◆	Spring 7/12 bar - FKM HT	1		314237.02	
			<b>DOUBLE BYPASS, COMPLETE :</b>				
820		◆	Spring 3/6 bar - FKM	1		310502.01	
820		◆	Spring 3/6 bar - CVT	1		310504.01	
820		◆	Spring 3/6 bar - FKM HT	1		310503.01	
820		◆	Spring 7/12 bar - FKM	1		314236.02	
820		◆	Spring 7/12 bar - CVT	1		314240.02	
820		◆	Spring 7/12 bar - FKM HT	1		314238.02	
	108		Seat		(1)*		
	115		Bypass orientation plate		(1)		
	116		Plate rivet		(2)		
	125		Screw		(1)*		
	801		Bypass body		(1)		
	823	▲	Valve - Bypass spring 3/6 bar	1*		215388	
	823	▲	Valve - Bypass spring 7/12 bar	1*		314456.00	
	827		Cap		(1)*		
	858		Seal		(2)		
	859		Stud		(2)		
	859A		Gasket		(2)		
	866		Plug complete		(1)*		
	898	◆	Pressure screw assembly - Spring 3/6 bar - FKM	1*		310523.01	
	898	◆	Pressure screw assembly - Spring 3/6 bar - CVT	1*		310525.01	
	898	◆	Pressure screw assembly - Spring 3/6 bar - FKM HT	1*		310524.01	
	898	◆	Pressure screw assembly - Spring 7/12 bar - FKM	1*		314241.01	
	898	◆	Pressure screw assembly - Spring 7/12 bar - CVT	1*		314243.01	
	898	◆	Pressure screw assembly - Spring 7/12 bar - FKM HT	1*		314242.01	
	807		Seal		(1)		
	825		Spring guide		(1)		
	826		Pressure screw		(1)		
	831		Pin		(1)		
	834		Nut		(1)		
	835		Nut		(1)		
	837		Seal		(1)		
	856		Screw		(4)		
	824	▲	Spring 3 bar	1*		224641	
	824	▲	Spring 6 bar	1*		224643	
	824	▲	Spring 7/12 bar	1*		219068	
866		◆	<b>Complete plug</b>	1*		<b>310507.00</b>	
	850		Seal		(1)		
	857		Plug		(1)		
	860		Screw		(4)		

\* Quantity x 2 for double bypass



Reference			Description	Quantity		Article code	Wear parts
Ass.	Part	Available		In Pump	In set	P100 BI	
868		◆	Complete stirrup - FKM	1		314064.00	
868		◆	Complete stirrup - CVT	1		314066.00	
868		◆	Complete stirrup - FKM HT	1		314065.00	
	858		Seal		(2)		
	859		Screw		(1)		
	859A		Washer		(1)		
	865		Plug		(2)		
	867		Stirrup		(1)		
	858	▲	Seal (for Stirrup) - FKM	2		205803	
	858	▲	Seal (for Stirrup) - CVT	2		224056	
	858	▲	Seal (for Stirrup) - FKM HT	2		209269	
899		◆	Set of seals + diverse for 3/6 bar bypass - FKM	1 *		310516.00	
899		◆	Set of seals + diverse for 3/6 bar bypass - CVT	1 *		310518.00	
899		◆	Set of seals + diverse for 3/6 bar bypass - FKM HT	1 *		310517.00	
899		◆	Set of seals + diverse for 7/12 bar bypass - FKM	1 *		314251.00	
899		◆	Set of seals + diverse for 7/12 bar bypass - CVT	1 *		314253.00	
899		◆	Set of seals + diverse for 7/12 bar bypass - FKM HT	1 *		314252.00	
	807		Seal		(1)		
	831		Pin		(1)		
	834		Nut		(1)		
	835		Nut		(1)		
	837		Seal		(1)		
	850		Seal		(1)		
	856		Screw		(4)		
	858		Seal		(2)		
	859		Stud		(2)		
	859A		Gasket		(2)		
	860		Screw		(4)		

\* Quantity x 2 for double bypass

(◆) Sets of parts or (▲) parts available to order.

Keep this parts lists with Installation, Operation and Maintenance Instructions

To order the required spare parts, indicate the appropriate CUM numbers.



Z.I. la Plaine des Isles - 2 rue des Caillottes F-89000 AUXERRE - France  
 Tel : +33 (0)3 86 49 86 30 • Fax : +33 (0)3 86 49 87 17  
 contact@mouvex.com • www.mouvex.com