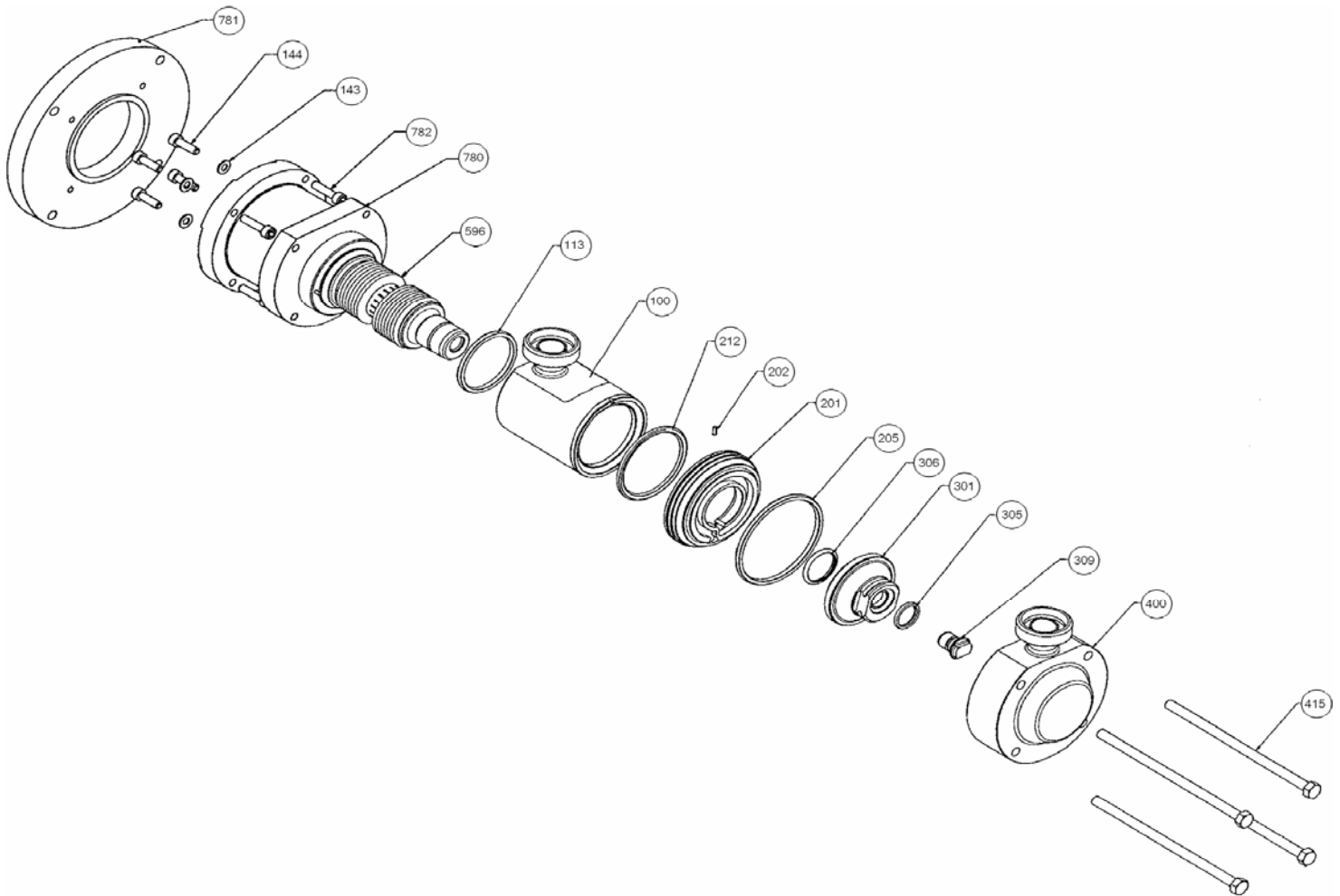


Section	1001
Effective	July 2009
Replaces	July 2008

(See Instructions 1001-P00 for Installation, Operation and Maintenance)



Reference			Description	Quantity		ARTICLE CODE	Wear parts
Ass.	Part	Available		Order	In Pump	MICRO C 125-250-500-800	
100		◆	Inlet Manifold DIN20	1		313828.00	
100		◆	Inlet Manifold CLAMP DN20	1		313829.00	
100		◆	Inlet Manifold 1/2" BSP	1		313830.00	
100		◆	Inlet Manifold 1/2" NPT	1		313831.00	
100		◆	Inlet Manifold SMS25	1		313918.00	
100		◆	Inlet Manifold CL ISO25	1		314046.00	
100		◆	Inlet Manifold CS F DN20	1		313949.00	
100		◆	Inlet Manifold BS4825-5 DN20	1		313977.00	
	102		Inlet tube		(1)		
	103		Connection		(1)		

(◆) Sets of parts or (▲) parts available to order

Reference			Description	Quantity		ARTICLE CODE	Wear parts
Ass.	Part	Available		Order	In Pump	MICRO C 125-250-500-800	
200		◆	Set cylinder/Piston C125	1		313836.01	•
200		◆	Set cylinder/Piston C250	1		313837.01	•
200		◆	Set cylinder/Piston C500	1		313838.01	•
200		◆	Set cylinder/Piston C800	1		314448.01	•
	201		Cylinder		(1)		
	301		Piston		(1)		
	309		Piston screw		(1)		
206		◆	Set of FKM 'O' ring seals	1		313839.00	•
206		◆	Set of CVT 'O' ring seals	1		313840.00	•
	113		Seal		(1)		
	205		Seal Ring		(1)		
	212		Seal		(1)		
	305		Seal		(1)		
	306		Seal		(1)		
400		◆	Front Cover Plate DIN20	1		313832.00	
400		◆	Front Cover Plate CLAMP DN20	1		313833.00	
400		◆	Front Cover Plate 1/2" BSP	1		313834.00	
400		◆	Front Cover Plate 1/2" NPT	1		313835.00	
400		◆	Front Cover Plate SMS25	1		313919.00	
400		◆	Front Cover Plate CL ISO25	1		314047.00	
400		◆	Front Cover Plate CS F DN20	1		313950.00	
400		◆	Front Cover Plate BS4825-5 DN20	1		313978.00	
415		▲	Screw	4		224186	
596		◆	Complete transmission	1		313817.02	
1024		◆	Transmission adaptation kit (for pump delivered before the 31.08.2008)	1		315143.00	
	309		Piston screw		(1)		
	780		Trunk		(1)		

CVT - FEP encapsulated FKM

(◆) Sets of parts or (▲) parts available to order

Keep this parts lists with Installation, Operation and Maintenance Instructions

To order the required spare parts, indicate the appropriate CUM numbers.



Z.I. la Plaine des Isles - 2 rue des Caillottes F-89000 AUXERRE - France
 Tel : +33 (0)3 86 49 86 30 • Fax : +33 (0)3 86 49 87 17
 contact@mouvex.com • www.mouvex.com