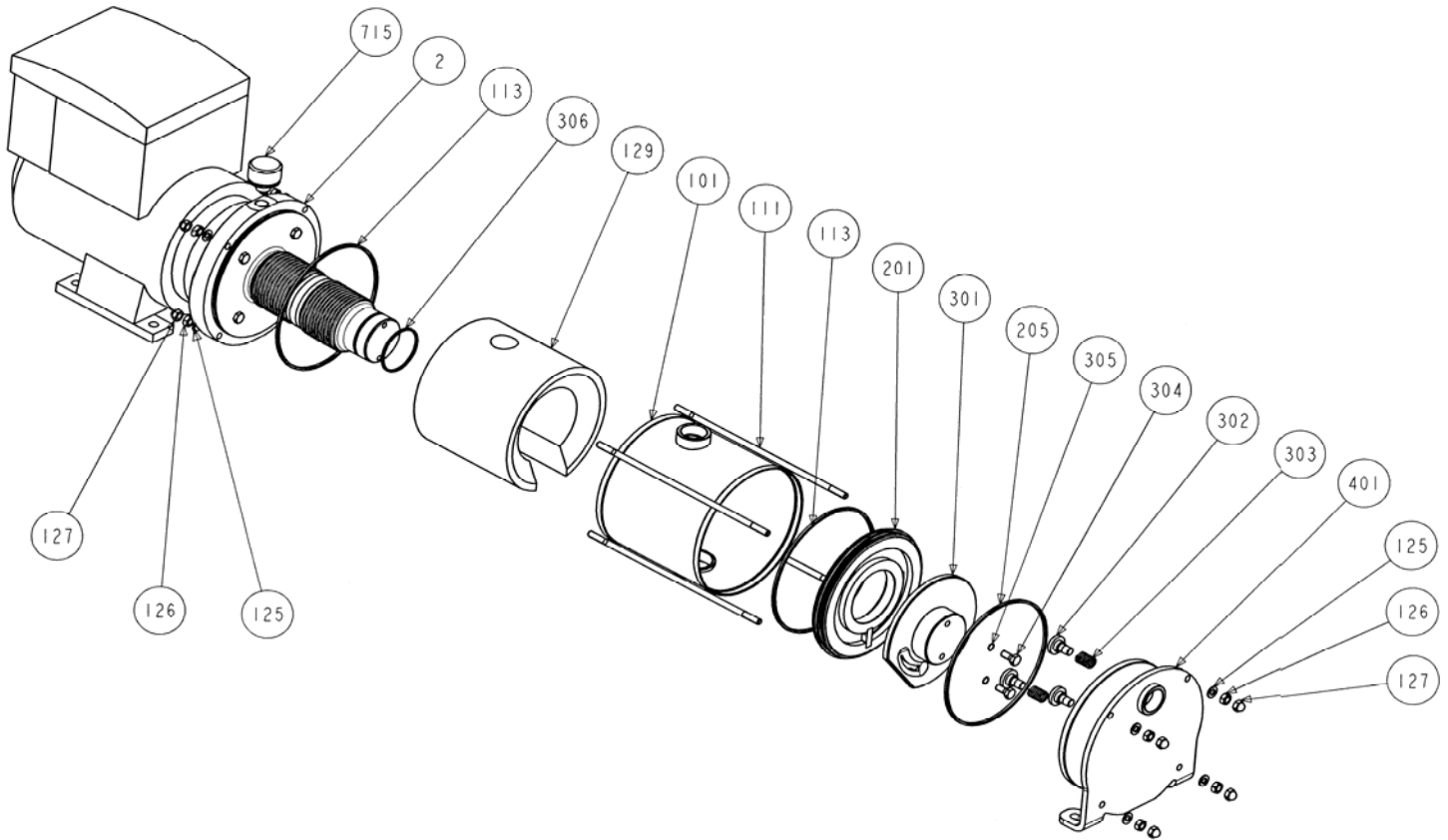


(See Instructions 1001-G00 for Installation, Operation and Maintenance)

Section	1001
Effective	May 2006
Replaces	October 2005



Reference			Description	Quantity		ARTICLE CODE	Wear parts
Ass.	Part	Available		Order	In Pump		
200	201 301	◆	Set cylinder/Piston Cylinder Piston	1	(1) (1)	313405.00	•
206	113 205 305 306	◆	Set of FKM 'O' ring seals Seal Seal Ring Seal Seal	1	(2) (1) (2) (1)	312281.00	•

(◆) Sets of parts or (▲) parts available to order

Keep this parts lists with Installation, Operation and Maintenance Instructions
To order the required spare parts, indicate the appropriate CUM numbers.



Z.I. la Plaine des Isles - 2 rue des Caillottes F-89000 AUXERRE - France
Tel : +33 (0)3 86 49 86 30 • Fax : +33 (0)3 86 49 87 17
contact@mouvex.com • www.mouvex.com