

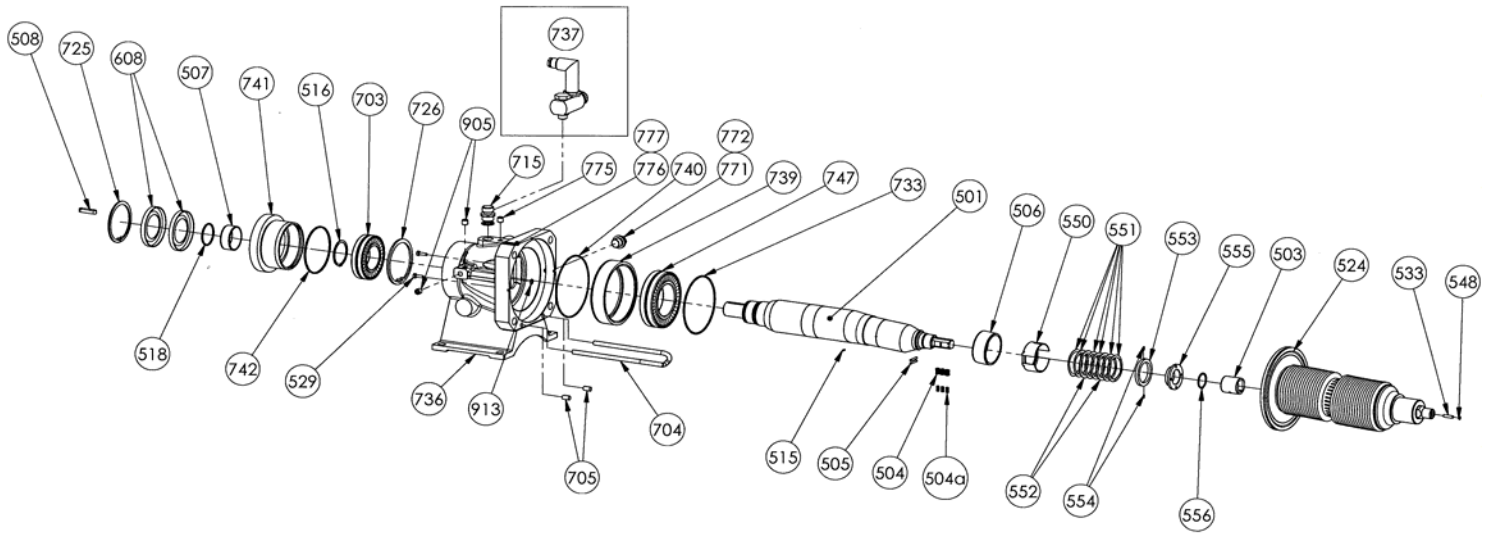
BLACKMER
MODEL :

PARTS LIST
Transmission C12 - C18

P.L. : 1001-M01

(See Instructions 1001-D00 for Installation, Operation and Maintenance)

Section	1001
Effective	April 2007
Replaces	New



Reference			Description	Quantity		ARTICLE CODE		Wear parts
Ass.	Part	Available		Order	In Pump	Standard	Jacket	
10		◆	Shaft Set	1		314245.00		
			Shaft		(1)			
		◆	Shaft ring set	1		314246.00		
			Ring		(1)			
			Pin		(1)			
12		◆	Radial return set	1		314247.00		
			Bushing bearing		(1)			
			Pin		(2)			
13		◆	Radial spring set	1		314248.00		
			Spring		(1)			
			Spring		(3)			
			Spring		(3)			
14		◆	Axial return set	1		313812.00		
			Cage		(1)			
			Friction face		(1)			
			Pin		(2)			
			Spring seat		(1)			
			Circlips		(1)			
		◆	Axial spring set	1		313813.00		
			Wave spring		(6)			
			Washer		(2)			

(◆) Sets of parts or (▲) parts available to order

Reference			Description	Quantity		ARTICLE CODE		Wear parts
Ass.	Part	Available		Order	In Pump	Standard	Jacket	
16	529 533 508	◆	Screws set Screw Screw Key	1	(3) (1) (1)	313788.00		
17		◆	Bellows set	1		314244.00		
18	703 726 516 747	◆	Ball bearing set Self aligning bearing Circlip Circlips Self aligning roller bearing	1 1	(1) (1) (1) (1)	314075.00		
19	736 739 741 704 705	◆ ▲ ▲ ▲	Bearing set Main bearing Front bearing insert Back bearing insert Pipe support Pin	1 1 1 1 1 2	(5) (1) (1) (1) (2)	314249.00 223733 220405 220406 -	314250.00 - -	
20	733 740 742 913	◆	Seals set O ring O ring O ring O ring	1	(1) (1) (1) (1)	314153.00		
8	715 771 772 775 905	◆	Plugs set Breather Seal Plug Plug Plug	1	(1) (1) (1) (1) (2)	314259.00		
9	507 518 608 725	◆	Lip seal set Ring O ring Lip seal Circlip	1	(1) (1) (2) (1)	312855.01		•
Reference			Description	Quantity		ARTICLE CODE		Wear parts
Ass.	Part	Available		Order	In Pump	Standard	ATEX	
737	727 728 729 730 732	◆	Failure detector kit Failure detector coupling Failure detector banjo screw Bonded Seal Capacitive proximity switche Amplifier	1	(1) (1) (2) (1) (1)	312963.00 -	312966.00	

(◆) Sets of parts or (▲) parts available to order

Keep this parts lists with Installation, Operation and Maintenance Instructions

To order the required spare parts, indicate the appropriate CUM numbers



ZI la Plaine des Isles - 2 Rue des Caillottes 89000 AUXERRE - France 1809 Century Avenue, Grand Rapids, Michigan 49503-1530, U.S.A.

Tél. : +33 3.86.49.86.40 or +33 3 86.49.87.09 - Fax : +33 3.86.49.87.17 Telephone: (616) 241-1611 / Fax: (616) 241-3752

E-Mail : contact@blackmer-mouvex.com Internet : www.blackmer.com E-Mail: blackmer@blackmer.com / Internet: www.blackmer.com