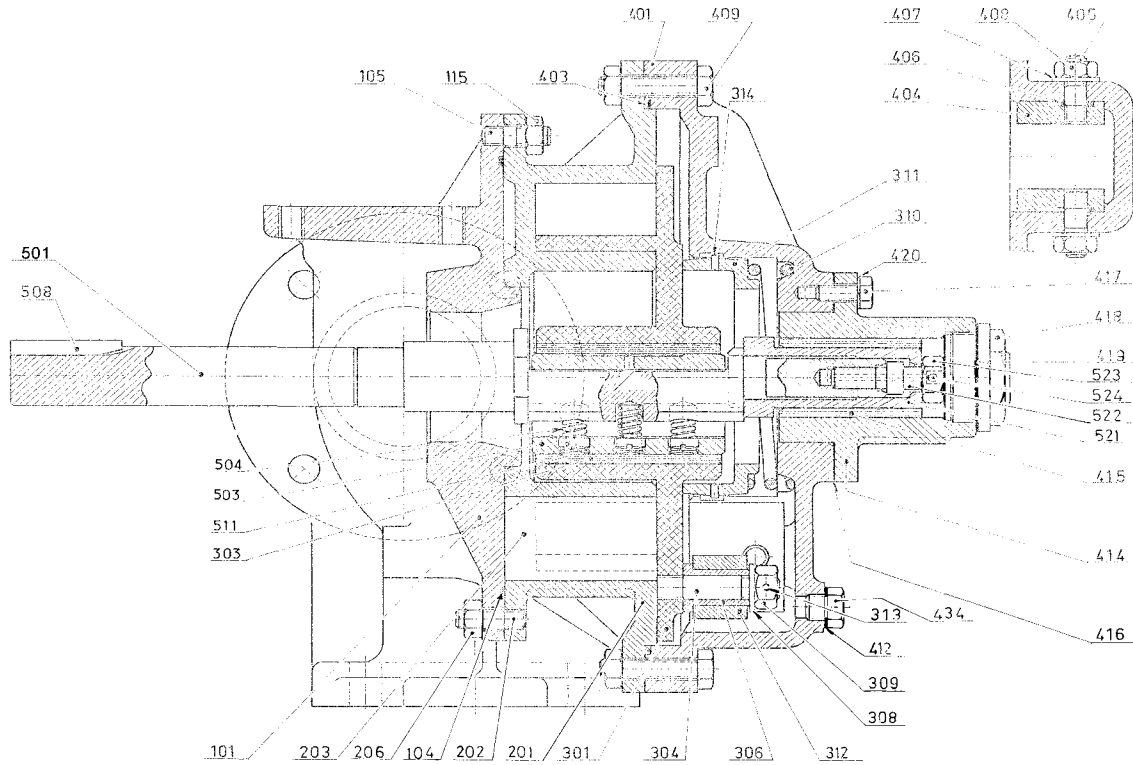


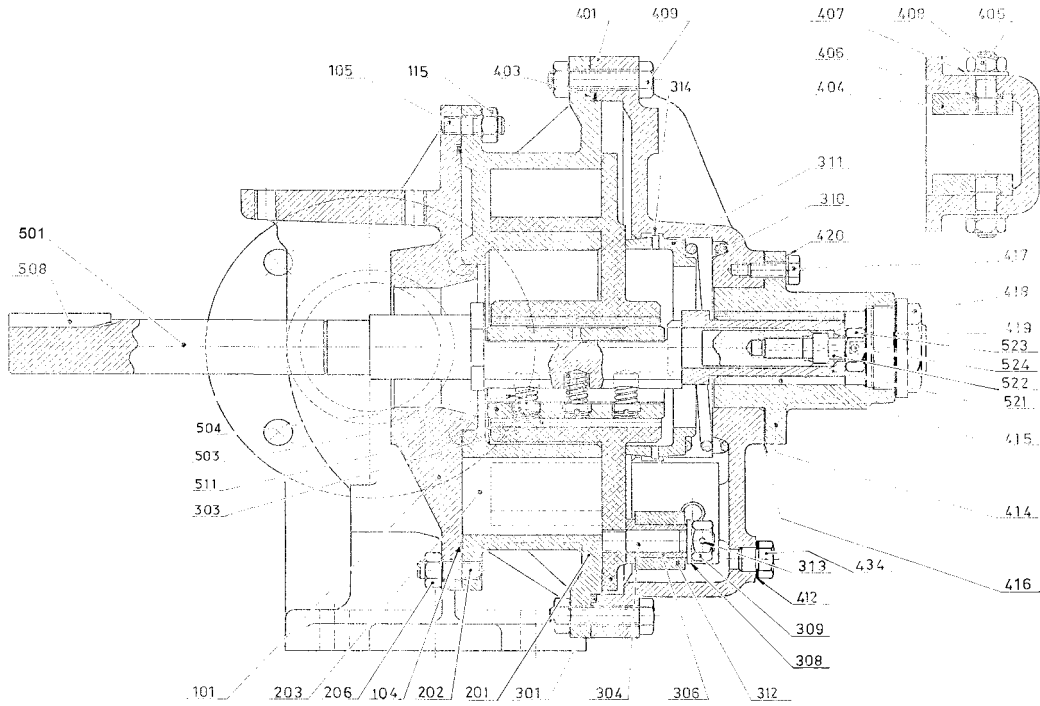
(See Instructions 1003-J00 for Installation, Operation and Maintenance)

Section Effective Replaces	1003 July 2004
----------------------------	-------------------



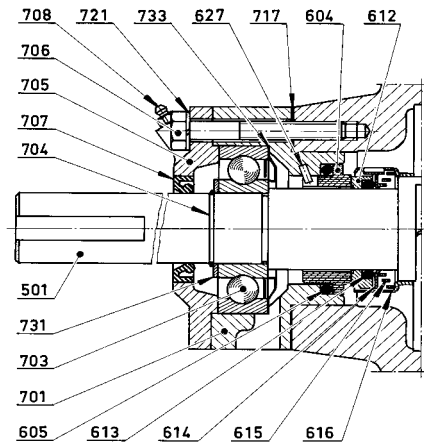
Reference			Description	Quantity		ARTICLE CODE	Wear parts		
Ass.	Part	Available		Order	In Pump	AL O HP			
98		◆	Full set of screws	1		300599.00			
			105					Stud	(5)
			115					Nut	(5)
			202					Stud	(5)
			206					Nut	(5)
			409					Screw	(8)
			409a					Nut	(8)
			417					Screw	(4)
			420					Washer	(4)
			98						◆
105	Stud	(5)							
115	Nut	(5)							
202	Stud	(5)							
206	Nut	(5)							
409	Screw	(7)							
409a	Nut	(7)							
417	Screw	(4)							
420	Washer	(4)							
424	Stud	(1)							
436	Gasket	(1)							
99		◆	Full set of seals - VITON®	1		300601.00			
99		◆	Full set of seals - VITON® (Heating jacket)	1		304057.00			
99		◆	Full set of seals - EPDM	1		300602.00			
	104		Gasket		(1)				
	403		Front cover seal		(1)				
	406		Seal		(2)				
	416		Gasket		(1)				
	419		Seal		(1)				
	1002		Seal		(1)				

(◆) Sets of parts or (▲) parts available to order



Reference			Description	Quantity		ARTICLE CODE	Wear parts
Ass.	Part	Available		Order	In Pump	AL O HP	
400		◆	Complete front cover - VITON®	1		300706.00	
460		◆	Complete front cover with jacket	1		304049.00	
400		◆	Complete front cover - EPDM	1		300704.00	
	401		Front cover		(1)		
	461		Jacketed front cover		(1)		
	462		Jacket drain plug		(2)		
	402	◆	Front bushing set - VITON®	1		300603.00	●
	402	◆	Front bushing set - Teflon encapsulated VITON®	1		300608.04	●
	402	◆	Front bushing set - EPDM	1		300604.00	●
	404		Guide		(2)		
	405		Stud		(2)		
	406		Seal		(2)		
	407		Washer		(2)		
	408		Nut		(2)		
	411	◆	Front cover drain plug + seal	1		300036.00	
	412		Seal		(1)		
	434		Drain plug		(1)		
	403	▲	Front cover seal - VITON®	1		200840	
	403	▲	Front cover seal - EPDM	1		200902	
413		◆	Front cover bearing complete - Bronze bushing	1		300597.00	
413		◆	Front cover bearing complete - Carbon bushing	1		307654.00	
	414		End-plate bearing		(1)		
	415	▲	Bearing bushing - Bronze	1		201615	●
	415	▲	Bearing bushing - Carbon	1		211658	●
	416		Gasket		(1)		
	417		Screw		(4)		
	418		Plug		(1)		
	419		Seal		(1)		
	420		Washer		(4)		
500		◆	Shaft Blocdir complete	1		312274.00	
	501	▲	Shaft	1		219469	
	503	▲	Piston bearing	1		203600	●
	508	▲	Key	1		203857	
	598	◆	Bearing spring complete	1		300598.00	
	504		Spring		(3)		
	511		Screw		(3)		
	515	◆	Complete sleeve	1		300716.00	●
	521		Sleeve		(1)		
	522		Screw		(1)		
	523		Nut		(1)		
	524		Pin		(1)		

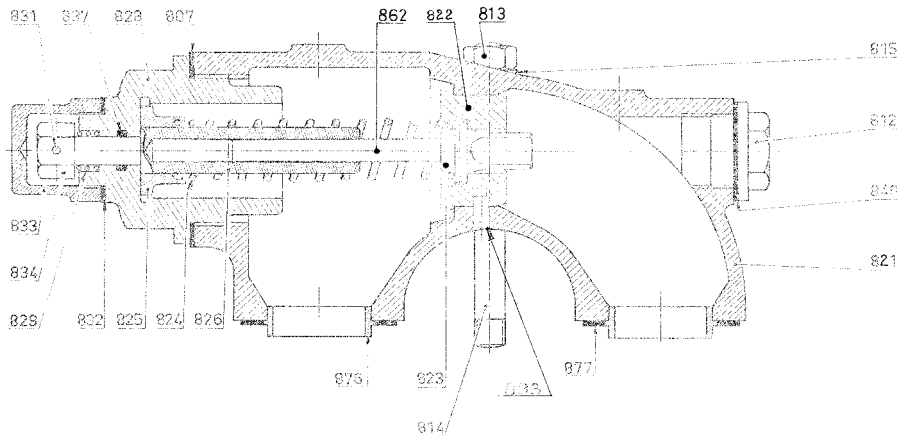
(◆) Sets of parts or (▲) parts available to order



Reference			Description	Quantity		ARTICLE CODE	Wear parts
Ass.	Part	Available		Order	In Pump	AL O HP	
600		◆	Mechanical seal - Bloccdir C/I VT	1		300639.00	●
600		◆	Mechanical seal - Bloccdir B/I VT	1		300648.00	●
600		◆	Mechanical seal - Bloccdir F/I VT	1		300649.00	●
600		◆	Mechanical seal - Bloccdir CT/CT VT	1		303333.00	●
600		◆	Mechanical seal - Bloccdir C/I CVT	1		307549.00	●
600		◆	Mechanical seal - Bloccdir B/I CVT	1		306317.00	●
600		◆	Mechanical seal - Bloccdir F/I CVT	1		306318.00	●
600		◆	Mechanical seal - Bloccdir CT/CT CVT	1		307550.00	●
	610	◆	Stationary seal face complete - Bloccdir C VT	1		300722.00	●
	610	◆	Stationary seal face complete - Bloccdir B VT	1		300726.00	●
	610	◆	Stationary seal face complete - Bloccdir F VT	1		300727.00	●
	610	◆	Stationary seal face complete - Bloccdir CT VT	1		303331.00	●
	610	◆	Stationary seal face complete - Bloccdir C CVT	1		304608.00	●
	610	◆	Stationary seal face complete - Bloccdir B CVT	1		304609.00	●
	610	◆	Stationary seal face complete - Bloccdir F CVT	1		304610.00	●
	610	◆	Stationary seal face complete - Bloccdir CT CVT	1		306125.00	●
	604		Stationary seal face		(1)		
	605		Seal		(1)		
	697	◆	Rotating part - Bloccdir VT	1		300640.00	●
	697	◆	Rotating part - Bloccdir C VT	1		304617.00	●
	697	◆	Rotating part - Bloccdir CT VT	1		303332.00	●
	697	◆	Rotating part - Bloccdir CT CVT	1		306126.00	●
	612		Seal housing		(1)		
	613		Seal		(1)		
	614		Spring guide		(1)		
	615		Spring		(1)		
	616		Cage		(1)		
	619		Seal mounting tool (for CVT)		(1)		
698		◆	Full set of mounting screws	1		300632.00	
	706		Screw		(4)		
	721		Washer		(4)		
699		◆	Mechanical seal gasket set - VITON®	1		300641.00	
699		◆	Mechanical seal gasket set - CVT	1		305356.00	
	605		Seal		(1)		
	613		Seal		(1)		
	619		Seal mounting tool (for CVT)		(1)		
700		◆	Ball bearings complete	1		300631.00	
	627	▲	Pin	1		200139	
	701		Bearing cage		(1)		
	703	▲	Ball bearing	1		200555	●
	705		Bearing cover		(1)		
	706		Screw		(4)		
	708		Grease nipple		(1)		
	721		Washer		(4)		
	797	◆	Ball bearing washers and gasket set	1		300719.00	
	704		Ring		(1)		
	707		Lip seal		(1)		
	717		Cage seal		(1)		
	731		Washer		(1)		
	733		Protection circlip		(1)		

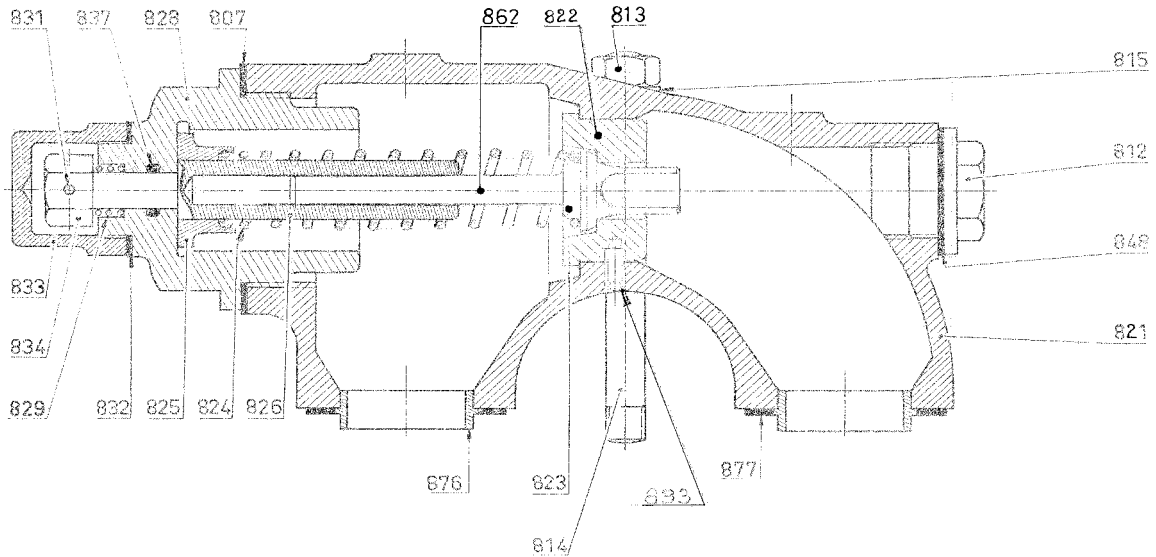
C - Carbon : F - Cast Iron : B - Bronze : CT - Tungsten Carbide : VT - Viton® : CVT - Teflon encapsulated Viton®

(◆) Sets of parts or (▲) parts available to order



Reference			Description	Quantity		ARTICLE CODE	Wear parts
Ass.	Part	Available		Order	In Pump	AL O HP	
820		◆	Bypass C/2 complete - VITON®	1		306248.00	
820		◆	Bypass C/2 complete - EPDM	1		306249.00	
820		◆	Bypass C/3 complete - VITON®	1		306253.00	
820		◆	Bypass C/3 complete - EPDM	1		306254.00	
	870	◆	Bypass body complete	1		301759.00	
	812		Plug		(1)		
	821		Bypass body		(1)		
	848		Seal		(1)		
	824	▲	Spring n°2	1		201189	
	824	▲	Spring n°3	1		201190	
	869	◆	Bypass cap and gasket	1		300740.00	
	832		Seal		(1)		
	833		Cap		(1)		
	878	◆	Centering set	1		300739.00	
	876		Centering piece		(2)		
	877		Centering gasket		(2)		
	897	◆	Adjusting screw/valve set - VITON®	1		306246.00	
	897	◆	Adjusting screw/valve set - clapet VITON® R.5	1		306247.00	
	807		Seal		(1)		
	825		Spring guide		(1)		
	826		Adjusting screw		(1)		
	828		Nut		(1)		
	829		Spring		(1)		
	831		Pin		(1)		
	834		Adjustment nut		(1)		
	837		Seal		(1)		
	864	◆	Complete valve	1		301762.00	
	823		Compensated valve		(1)		
	862		Valve guide rod		(1)		
	863		Valve securing pin		(1)		
	899	◆	Bypass gasket set - VITON®	1		300664.00	
	899	◆	Bypass gasket set - EPDM	1		300663.00	
	807		Seal		(1)		
	829		Spring		(1)		
	831		Pin		(1)		
	832		Seal		(1)		
	837		Seal		(1)		
	846		Seal		(1)		
	848		Seal		(1)		
	877		Centering gasket		(2)		

(◆) Sets of parts or (▲) parts available to order



Reference			Description	Quantity		ARTICLE CODE	Wear parts
Ass.	Part	Available		Order	In Pump	AL O HP	
VARIATIONS							
COMPLETE COMPENSATED DOUBLE BYPASS							
The body is different to the standard compensated bypass. The other parts are the same but doubled							
820a		◆	Double bypass C/2 complete - VITON®	1		306250.00	
820a		◆	Double bypass C/2 complete - EPDM	1		306251.00	
820a		◆	Double bypass C/3 complete - VITON®	1		306256.00	
820a		◆	Double bypass C/3 complete - EPDM	1		306257.00	
	870a	◆	Double bypass body complete	1		301763.00	
	821a		Double bypass body		(1)		
849		◆	Complete stirrup	1		301649.01	
	852		Stirrup		(1)		
	853		Stud		(2)		
	854		Plug		(2)		
	855		Seal		(2)		
To mount a bypass in place of a stirrup will require							
	817	◆	Mounting kit	1		300693.00	
	813		Nut		(2)		
	814		Stud		(2)		
	815		Washer		(2)		

(◆) Sets of parts or (▲) parts available to order

Keep this parts lists with Installation, Operation and Maintenance Instructions

Viton® is registered trademark of E.I. DuPont.

To order the required spare parts, indicate the appropriate CUM numbers

blackmer
PEOPLE PROVIDING FLOW TECHNOLOGY WORLDWIDE™

ZI la Plaine des Isles - 2 Rue des Caillottes 89000 AUXERRE - FRANCE

Tél. : +33 3.86.49.86.40 or +33 3 86.49.87.09 - Fax : +33 3.86.49.87.17

E-Mail : contact@blackmer-mouvex.com Internet : www.blackmer.com