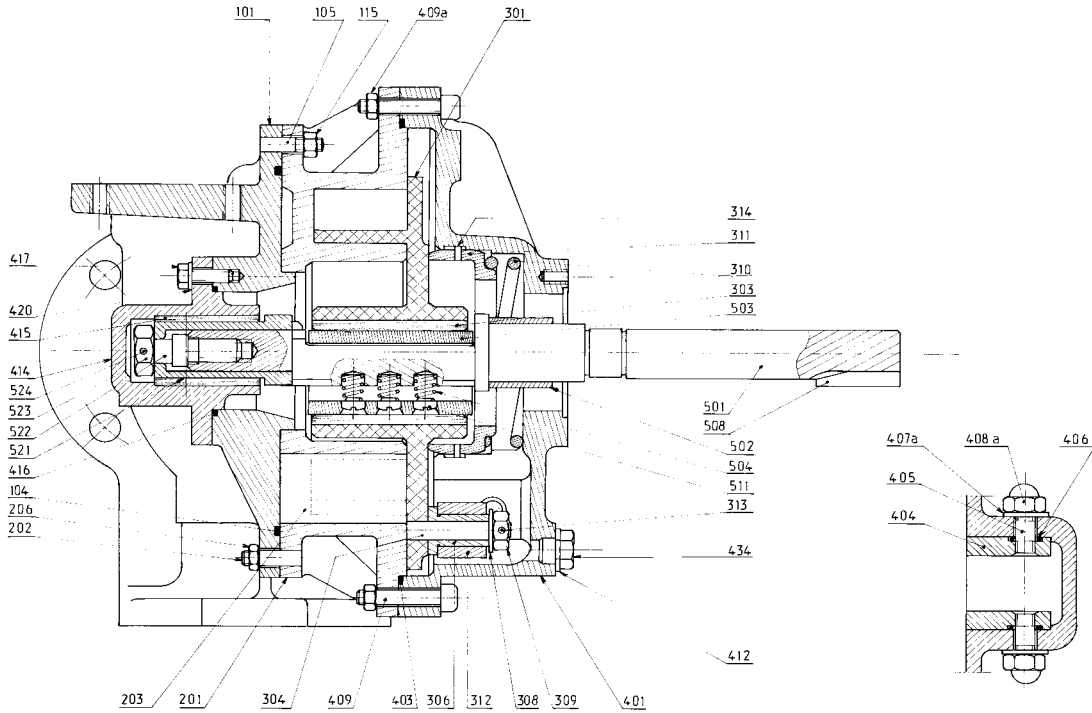


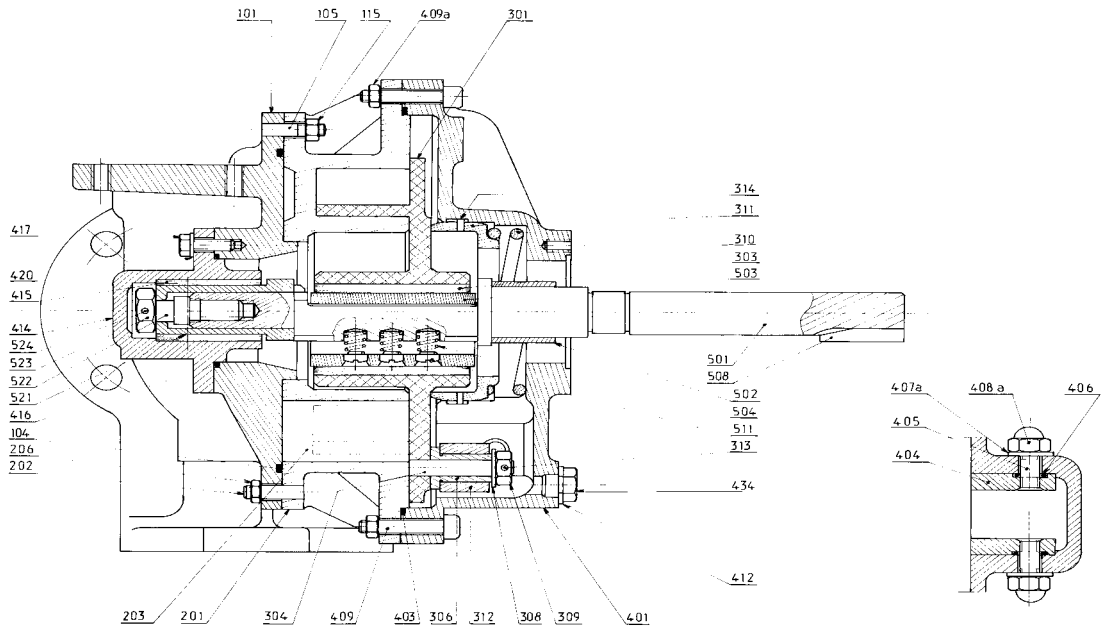
(See Instructions 1003-G00 for Installation, Operation and Maintenance)

Section	1003
Effective	July 2004
Replaces	



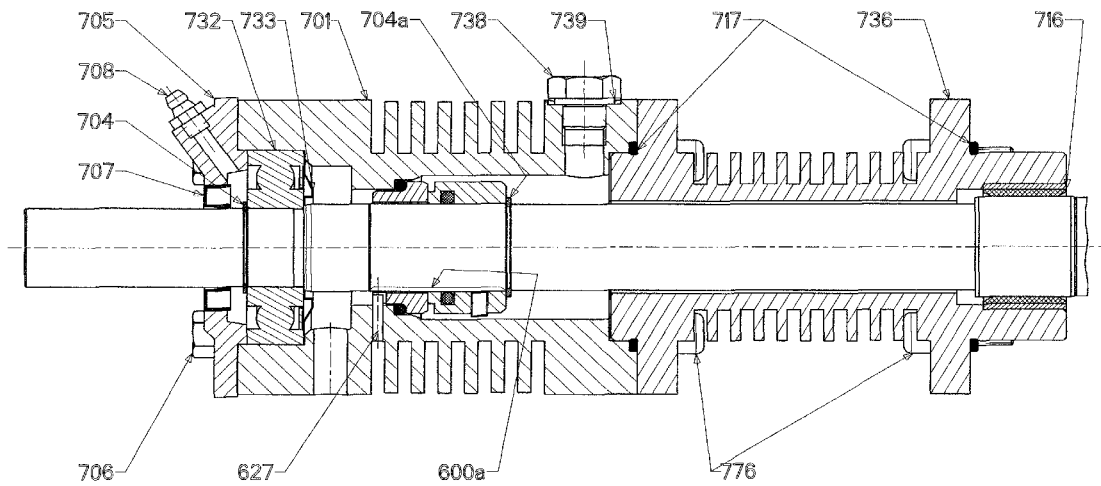
Reference			Description	Quantity		ARTICLE CODE	Wear parts
Ass.	Part	Available		Order	In Pump	AK HT	
99		◆	Full set of screws / seals	1		311708.00	
	104		Gasket		(1)		
	105		Stud		(7)		
	115		Nut		(7)		
	202		Stud		(3)		
	206		Nut		(3)		
	403		Front cover seal		(1)		
	405		Stud		(2)		
	406		Seal		(2)		
	407a		Seal		(2)		
	408a		Nut		(2)		
	409		Screw		(16)		
	409a		Nut		(16)		
	411		Front cover drain plug + seal		(1)		
	412		Seal		(1)		
	434		Drain plug		(1)		
	416		Gasket		(1)		
	417		Screw		(4)		
	420		Washer		(4)		
	1000		Plug		(1)		
	1001		Plug		(1)		
	1002		Seal		(1)		

(◆) Sets of parts or (▲) parts available to order



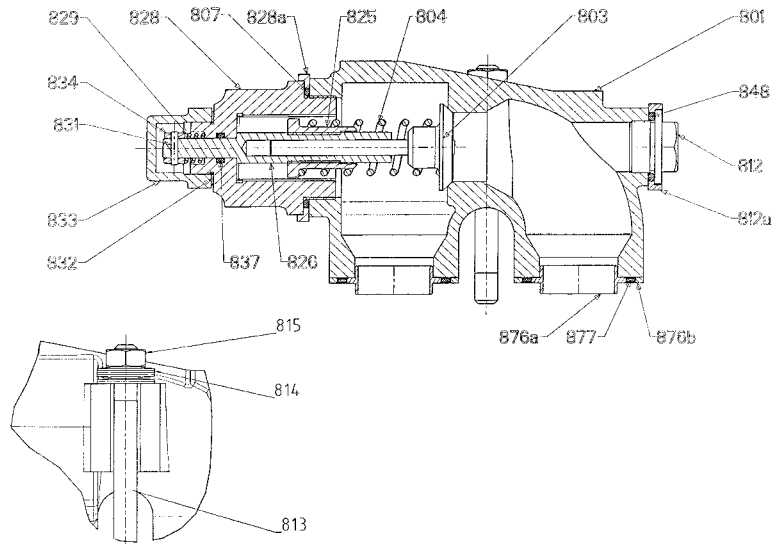
Reference			Description	Quantity		ARTICLE CODE	Wear parts
Ass.	Part	Available		Order	In Pump	AK HT	
100	101	◆	Main body, complete	1		300138.04	
	105		Main body		(1)		
	115		Stud		(7)		
	817	◆	Nut		(7)		
	813		Mounting kit	1		300139.00	
	814		Nut		(2)		
	815		Stud		(8)		
	877		Washer		(2)		
200	201	◆	Cylinder, complete	1		311712.00	●
	203	▲	Cylinder		(1)	201507	
300	301	◆	Complete piston	1		311750.04	●
	303	▲	Piston		(1)	218282	●
	398	◆	Piston bushing	1		300003.00	
	304		Slide block, complete	1			
	308		Block pin		(1)		
	309		Washer		(1)		
	307	◆	Nut		(1)		
	306		Slide block + pin + bushing	1		300122.00	●
	312		Bushing		(1)		
	313		Slide block		(1)		
399	310	◆	Guide block, complete	1		300004.00	
	311		Spring		(3)		
400	401	◆	Complete front cover	1		300140.04	
	402	◆	Front cover		(1)		
	404		Front bushing set	1		300016.04	●
	405		Guide		(2)		
	406		Stud		(2)		
	407		Seal		(2)		
	408		Washer		(2)		
	411	◆	Nut		(2)		
	412		Front cover drain plug + seal	1		300036.00	
434		Seal		(1)			
	403	▲	Drain plug	1			
	403	▲	Front cover seal	1		216304	
413	414	◆	Front cover bearing complete	1		311305.04	
	415	▲	End-plate bearing		(1)	218287	●
	416		Bearing bushing	1			
	417		Gasket		(1)		
	420		Screw		(4)		
	1000		Washer		(4)		
			Plug		(1)		

(◆) Sets of parts or (▲) parts available to order



Reference			Description	Quantity		ARTICLE CODE	Wear parts
Ass.	Part	Available		Order	In Pump	AK HT	
500		◆	Shaft complete	1		311709.00	
	501	▲	Shaft	1		218329	
	502		Bushing		(1)		
	503	▲	Piston bearing	1		203567	•
	508	▲	Key	1		204521	
	598	◆	Bearing spring complete	1		300144.00	
	504		Spring		(3)		
	511		Screw		(3)		
	515	◆	Complete sleeve	1		300145.00	•
	521		Sleeve		(1)		
	522		Screw		(1)		
	523		Nut		(1)		
	524		Pin		(1)		
	700		◆	Ball bearings complete	1		311710.00
		◆	Mechanical seal + seals + screws	1		311714.00	•
600			Mechanical seal		(1)		
600a			Mechanical seal		(1)		
704			Circlip		(1)		
704a			Circlip		(1)		
706			Screw		(4)		
707			Lip seal		(1)		
717			Cage seal		(2)		
733			Protection circlip		(1)		
738			Plug		(1)		
739			Seal		(1)		
776			Stud		(8)		
627			Pin		(1)		
701			Bearing cage		(1)		
705			Bearing cover		(1)		
708			Grease nipple		(1)		
732			Bearing		(1)		
736a			Bearing complete		(1)		
716			Bushing		(1)		
736		Bearing HT		(1)			

(◆) Sets of parts or (▲) parts available to order



Reference			Description	Quantity		ARTICLE CODE	Wear parts
Ass.	Part	Available		Order	In Pump	AK HT	
800		◆	Bypass complete - HT	1		300188.04	
	801		Bypass body		(1)		
	803		Valve		(1)		
	804	▲	Spring	1		201187	
	812		Plug		(1)		
	812a		Bushing		(1)		
	825		Spring guide		(1)		
	826		Adjusting screw		(1)		
	828		Nut		(1)		
	828a		Bushing		(1)		
	833		Seat (only available in construction I)		(1)		
	834		Plug (only available in construction I)				
	899	◆	Bypass gasket set -HT	1		300091.04	
	807		Seal		(1)		
	829		Spring		(1)		
	831		Pin		(1)		
	832		Seal		(1)		
	837		Seal		(1)		
	848		Seal		(1)		
	876a		Internal centering		(2)		
	876b		External centering		(2)		
	817	◆	Mounting kit	1		300139.00	
	813		Nut		(2)		
	814		Stud		(8)		
	815		Washer		(2)		
	877		Centering gasket		(2)		

(◆) Sets of parts or (▲) parts available to order

Keep this parts lists with Installation, Operation and Maintenance Instructions

Viton® is registered trademark of E.I. DuPont.

To order the required spare parts, indicate the appropriate CUM numbers

blackmer
PEOPLE PROVIDING FLOW TECHNOLOGY WORLDWIDE™

ZI la Plaine des Isles - 2 Rue des Caillottes 89000 AUXERRE - FRANCE

Tél. : +33 3.86.49.86.40 or +33 3 86.49.87.09 - Fax : +33 3.86.49.87.17

E-Mail : contact@blackmer-mouvex.com Internet : www.blackmer.com