

SHAFT SEAL

AD AF AK AL AM AR

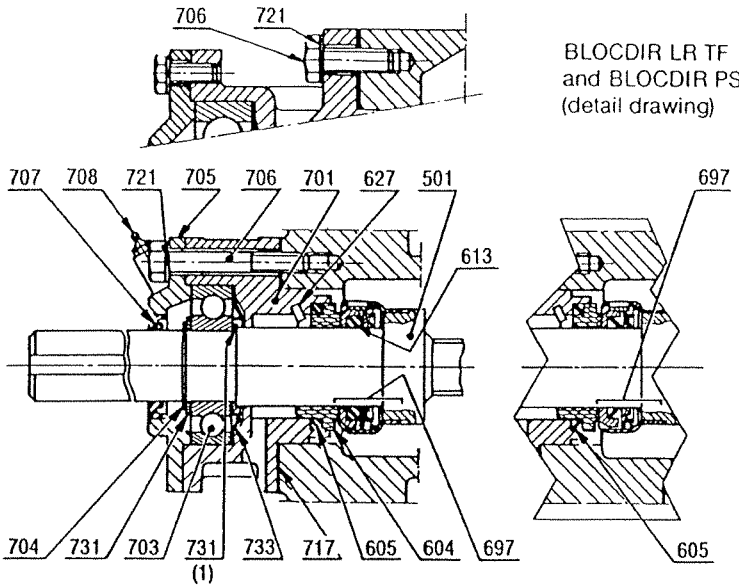
BLACKMER
ZI PLAINE DES ISLES
F- 89000 AUXERRE

Tel. : +33 3.86.49.87.16
Fax : +33 3.86.49.87.17
e-mail : contact@blackmer-mouvex.com

Your distributor :

(1) type AF only

Key: ▲ - Assemblies and parts available for supply.



BLOCDIR LR TF
and BLOCDIR PS
(detail drawing)

REF.	Nb.	PART NAME
▲ 698	1	FULL SET OF SCREWS 706 + 721(
▲ 699	1	FULL SET OF SHAFT SEAL GASKETS (605 + 613 + 704)
▲ 500	1	BLOCDIR SHAFT, COMPLETE *
▲ 505	1	BLOCDIR SHAFT WITH LUBRICATION DUCT* (501 + 506) (+ 513 in AM,AR. Blocdir shaft * See Technical Form of pump
501	1	
▲ 600	1	BLOCDIR SHAFT SEAL, COMPLETE **
▲ 610	1	STATIONARY SEAL FACE COMPLETE**
604	1	Stationary seal face
605	1	Stationary face ring (see 699)
▲ 697	1	BLOCDIR ROTARY SEAL ** ** Supply also 797
▲ 700	1	BLOCDIR BALL BEARING, COMPLETE
701	1	Retainer
▲ 627	1	Stationary face pin
▲ 703	1	Ball bearing
705	1	Bearing cap
706	4	Retainer screw (AD: 3 - AM,AR. : 6) (see 698)
708	1	Lubrication nipple
721	4	Lockwasher (AD: 3 - AM,AR. : 6) (see 698)
▲ 797	1	SET OF BALL BEARING WASHERS AND GASKETS
704	1	Snap ring (see 699)
707	1	Outer seal
717	1	Retainer gasket
731	1	Resting washer (AF: 2)
733	1	Protection ring

NOTE — When ordering replacement parts, mention :

- the TYPE and SERIAL NUMBER of the pump (stamped on the pump plate)
- the Technical Form n° 254
- the REFERENCE and NAME of the part required (remembering that only complete assemblies or individual parts whose index number is preceded by a triangle (▲) can be supplied).

OPERATION

Rotary seal **697** rotates with shaft **501** thanks to 2 tongues fitting into 2 notches on shaft.

Stationary seal **604** is held in pump body by ring **605** and pin **627**.

Sealing is therefore provided by :

- 1 — ring of rotary seal **697** on shaft,
- 2 — faces of rotary seal **697** and stationary seal **604**,
- 3 — ring **605** between retainer **701** and stationary seal **604**.

Tight sealing depends on rings and sealing faces being in good condition.

DISASSEMBLY

Pump being opened :

- Remove screws **706** and washers **721** (on type AV prior to that, remove screws **723** and washers **724**).
- Remove cap **705** and seal **707**.
- Release shaft **501** by tapping with a hammer on shaft end.
- Remove snap ring **704**, washer **731**. Drive out retainer **701** — bearing **703** — ring **733** by tapping on shaft end.
- Remove ring **605**, stationary seal **604** and rotary seal **697**.

ASSEMBLY

Check rings **605**, **707** and rotary seal **697**.

Check that sealing faces of new **604** and new **697** are flat and mirror smooth.

- Replace all parts on shaft in the reverse order. With the BLOCDIR LR TF or the BLOCDIR PS, use the reassembling ring supplied with the shaft seal. This ring must be slid along the shaft up to the shoulder to enable assembly **697** to be fitted without damaging the cup.
(After assembly, remove the ring).
- Make sure that the 2 tongues of rotary seal **697** fit into the notches on shaft **501**.
- Make sure that pin **627** fit into housing in stationary seal **604**.
- Install snap ring **704**.
- Replace gasket **717** and shaft with ball-bearing and seal into casing. Make sure that one of the drain vents is turned downwards.
- Install cap **705** and seal **707**, taking care not to damage seal **707** on key-groove, then screws **706** and washers **721**

MAINTENANCE — Bearing lubrication

Bearing should be lubricated :

- every 1000 hours of use in case of in-door pumps protected from bad weathers and running at normal temperatures,
 - every 500 hours of use in any other case.
- Use ball bearing greases of good quality.
Use greases with melting point for pumps working at high temperatures (i.e. : from 100° C).