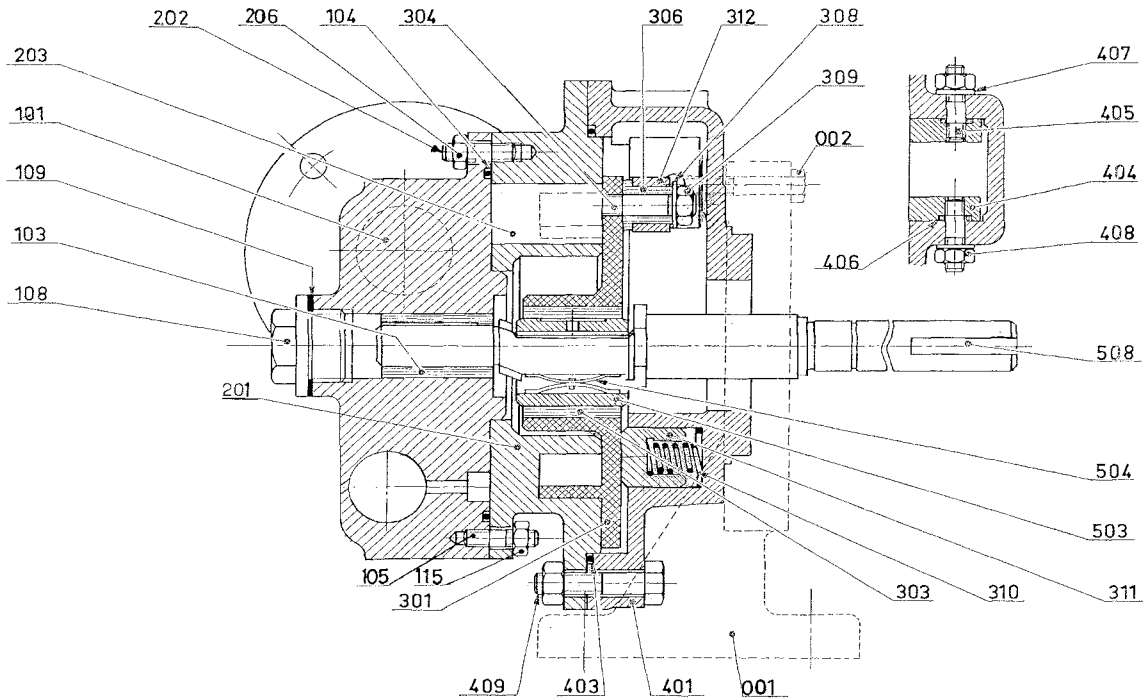


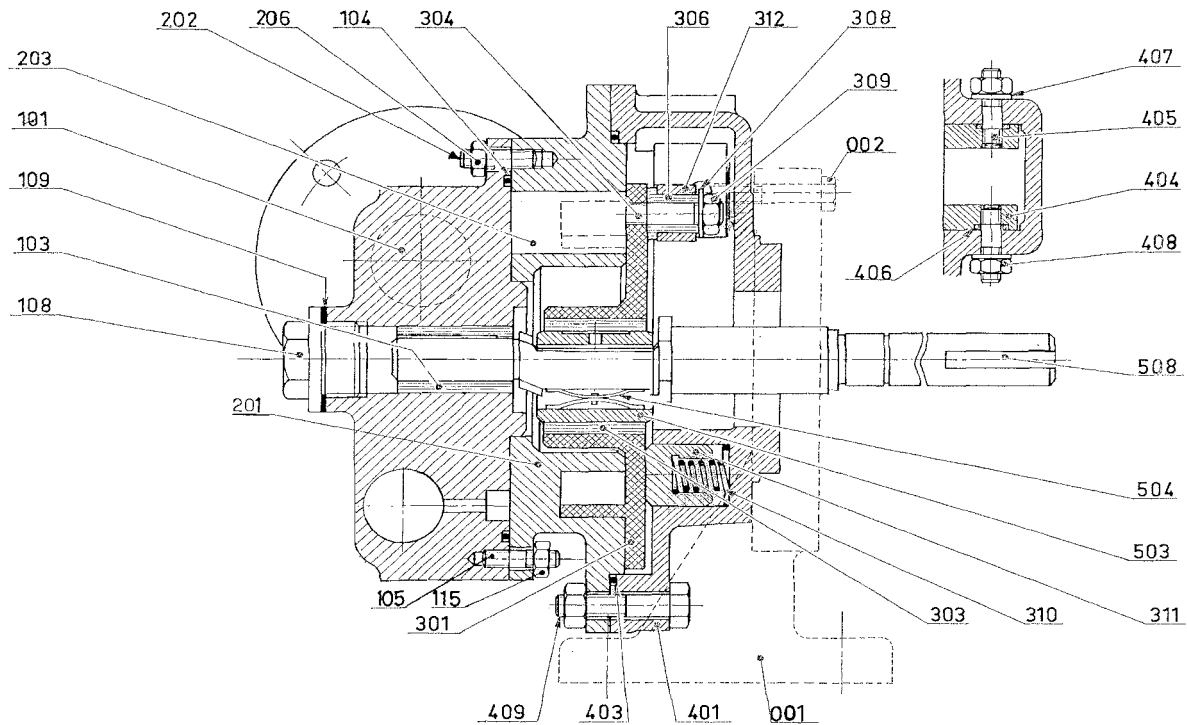
Section	1003
Effective	July 2004
Replaces	

(See Instructions 1003-B00 for Installation, Operation and Maintenance)



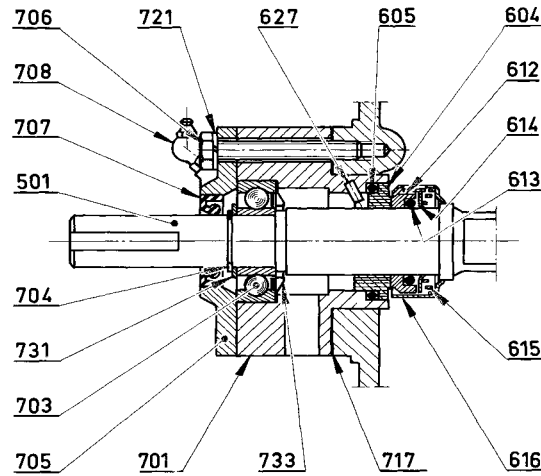
Reference			Description	Quantity		ARTICLE CODE		Wear parts
Ass.	Part	Available		Order	In Pump	AD O	AD I	
98		◆	Full set of screws	1		300339.00		
	105		Stud		(7)			
	115		Nut		(7)			
	202		Stud		(1)			
	206		Nut		(1)			
	409		Screw		(5)			
	409a		Nut		(5)			
99		◆	Full set of seals - VITON®	1		300350.00		
99		◆	Full set of seals - EPDM	1		300345.00		
	104		Gasket		(1)			
	109		Gasket		(1)			
	403		Front cover seal		(1)			
	406		Seal		(2)			
	1002		Seal		(1)			
100		◆	Main body, complete (Bronze bushing)	1		300312.00	300315.00	
100		◆	Main body, complete (Carbon bushing)	1		308390.00	308392.00	
	101		Main body		(1)			
	103	▲	Bronze bushing	1		201355		
	103	▲	Carbon bushing	1		211737		
	105		Stud		(7)			
	106		Plug		(2)			
	107		Screw		(2)			
	108		Plug		(1)			
	109		Gasket		(1)			
	115		Nut		(7)			
200		◆	Cylinder, complete	1		300319.00	300320.00	●
	201		Cylinder		(1)			
	202		Stud		(1)			
	203	▲	Bulkhead	1		207299	201358	
	206		Nut		(1)			

(◆) Sets of parts or (▲) parts available to order



Reference			Description	Quantity		ARTICLE CODE		Wear parts
Ass.	Part	Available		Order	In Pump	AD O	AD I	
300		◆	Complete piston - Bronze bushing	1		300322.00	300325.00	●
300		◆	Complete piston - Carbon bushing	1		308313.00	308312.00	●
300		◆	Complete piston (drilled) - Bronze bushing	1		311176.00	311179.00	●
300		◆	Complete piston (drilled) - Carbon bushing	1		311188.00	311189.00	●
	301		Piston		(1)			
	303	▲	Piston bushing (bronze)	1		201365		●
	303	▲	Piston bushing (carbon)	1		211736		●
	315		Screw (for drilled piston)		(1)			
	398	◆	Slide block, complete	1		300326.00	300327.00	
	304		Block pin		(1)			
	308		Washer		(1)			
	309		Nut		(1)			
	307	◆	Slide block + pin + bushing	1		300329.00	300330.00	●
	306		Bushing		(1)			
	312		Slide block		(1)			
399		◆	Guide block, complete	1		300332.00	300333.00	
	310		Spring		(3)			
	311		Piston rear - support		(3)			
400		◆	Complete front cover - VITON®	1		300346.00	300347.00	
400		◆	Complete front cover - EPDM	1		300341.00	300342.00	
	401		Front cover		(1)			
	402	◆	Front bushing set - VITON®	1		300348.00	300349.00	●
	402	◆	Front bushing set - EPDM	1		300343.00	300344.00	●
	404		Guide		(2)			
	405		Stud		(2)			
	406		Seal		(2)			
	407		Washer		(2)			
	408		Nut		(2)			
	403	▲	Front cover seal - VITON®	1		200876		
	403	▲	Front cover seal - EPDM	1		200893		
500		◆	Shaft Blocdir complete	1		312268.00	312269.00	
	501	▲	Shaft	1		219461	219463	
	503	▲	Piston bearing	1		203507	203508	●
	508	▲	Key	1		204523		
	504	▲	Spring	1		201396		

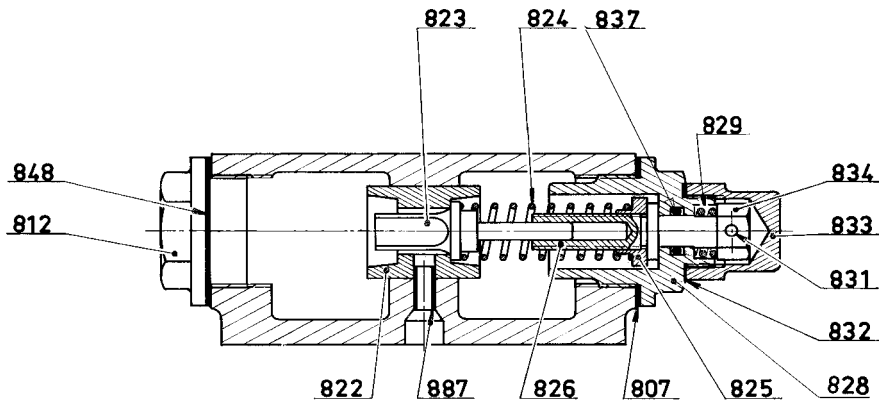
(◆) Sets of parts or (▲) parts available to order



Reference			Description	Quantity		ARTICLE CODE		Wear parts
Ass.	Part	Available		Order	In Pump	AD O	AD I	
600		◆	Mechanical seal - Bloccdir C/ VT	1		300373.00		•
600		◆	Mechanical seal - Bloccdir B/ VT	1		300387.00		•
600		◆	Mechanical seal - Bloccdir F/ VT	1		300388.00		•
600		◆	Mechanical seal - Bloccdir CT/CT VT	1		302946.00		•
600		◆	Mechanical seal - Bloccdir C/ CVT	1		307526.00		•
600		◆	Mechanical seal - Bloccdir B/ CVT	1		306319.00		•
600		◆	Mechanical seal - Bloccdir F/ CVT	1		306320.00		•
600		◆	Mechanical seal - Bloccdir CT/CT CVT	1		308198.00		•
	610	◆	Stationary seal face complete - Bloccdir C VT	1		300374.00		•
	610	◆	Stationary seal face complete - Bloccdir B VT	1		300389.00		•
	610	◆	Stationary seal face complete - Bloccdir F VT	1		300390.00		•
	610	◆	Stationary seal face complete - Bloccdir CT VT	1		302943.00		•
	610	◆	Stationary seal face complete - Bloccdir C CVT	1		304602.00		•
	610	◆	Stationary seal face complete - Bloccdir B CVT	1		304603.00		•
	610	◆	Stationary seal face complete - Bloccdir F CVT	1		304604.00		•
	610	◆	Stationary seal face complete - Bloccdir CT CVT	1		308201.00		•
	604		Stationary seal face		(1)			
	605		Seal		(1)			
	697	◆	Rotating part - Bloccdir VT	1		300375.00		•
	697	◆	Rotating part - Bloccdir CVT	1		304614.00		•
	697	◆	Rotating part - Bloccdir CT VT	1		302945.00		•
	697	◆	Rotating part - Bloccdir CT CVT	1		308202.00		•
	612		Seal housing		(1)			
	613		Seal		(1)			
	614		Spring guide		(1)			
	615		Spring		(1)			
	616		Cage		(1)			
	619		Seal mounting tool (for CVT)		(1)			
698		◆	Full set of mounting screws	1		300367.00		
	706		Screw		(4)			
	721		Washer		(4)			
699		◆	Mechanical seal gasket set - VITON®	1		300376.00		
699		◆	Mechanical seal gasket set - CVT	1		312500.00		
	605		Seal		(1)			
	613		Seal		(1)			
	619		Seal mounting tool (for CVT)		(1)			
700		◆	Ball bearings complete	1		300363.00 300364.00		
	627	▲	Pin	1		200139		
	701		Bearing cage		(1)			
	703	▲	Ball bearing	1		200546		•
	705		Bearing cover		(1)			
	706		Screw		(3)			
	708		Grease nipple		(1)			
	721		Washer		(3)			
	797	◆	Ball bearing washers and gasket set	1		300365.00 300366.00		
	704		Circlip		(1)			
	707		Lip seal		(1)			
	717		Cage seal		(1)			
	731		Washer		(1)			
	733		Protection circlip		(1)			

C - Carbon : F - Cast Iron : B - Bronze : CT - Tungsten Carbide : VT - Viton® : CVT - Teflon encapsulated Viton®

(◆) Sets of parts or (▲) parts available to order



Reference			Description	Quantity		ARTICLE CODE		Wear parts
Ass.	Part	Available		Order	In Pump	AD O	AD I	
820		◆	Bypass C/3 complete - VITON®	1		305804.00	308546.00	
820		◆	Bypass C/3 complete - EPDM	1		305805.00	308547.00	
820		◆	Bypass C/4 complete - VITON®	1		305807.00	308549.00	
820		◆	Bypass C/4 complete - EPDM	1		305808.00	308550.00	
	824	▲	Spring n°3	1		201175		
	824	▲	Spring n°4	1		201176		
	812	▲	Plug	1		204127	204568	
	848		Seal		(1)			
	868	◆	Seat (only available in construction I)	1		300422.00		
	822		Valve seat		(1)			
	887		Pin		(1)			
	869	◆	Bypass cap and gasket	1		300409.00		
	832		Seal		(1)			
	833		Cap		(1)			
	897	◆	Adjusting screw/valve set - VITON®	1		305796.00	308394.00	•
	897	◆	Adjusting screw/valve set - EPDM	1		305797.00	308551.00	•
	807		Seal		(1)			
	825		Spring guide		(1)			
	826		Adjusting screw		(1)			
	828		Nut		(1)			
	829		Spring		(1)			
	831		Pin		(1)			
	834		Adjustment nut		(1)			
	837		Seal		(1)			
	823		Compensated valve		(1)			
	899	◆	Bypass gasket set - VITON®	1		300428.00		
	899	◆	Bypass gasket set - EPDM	1		300427.00		
	807		Seal		(1)			
	829		Spring		(1)			
	831		Pin		(1)			
	832		Seal		(1)			
	837		Seal		(1)			
	846		Seal		(1)			
	848		Seal		(1)			
VARIATIONS								
849		◆	Complete stirrup	1		300435.00	300437.00	
	811		Bypass plug		(1)			
	812		Plug		(2)			
	848		Seal		(2)			
	887		Pin		(1)			

(◆) Sets of parts or (▲) parts available to order

Keep this parts lists with Installation, Operation and Maintenance Instructions

Viton® and Teflon® are registered trademarks of E.I. DuPont.

To order the required spare parts, indicate the appropriate CUM numbers

blackmer
PEOPLE PROVIDING FLOW TECHNOLOGY WORLDWIDE™

ZI la Plaine des Isles - 2 Rue des Cailottes 89000 AUXERRE - FRANCE

Tél. : +33 3.86.49.86.40 or +33 3 86.49.87.09 - Fax : +33 3.86.49.87.17

E-Mail : contact@blackmer-mouvex.com Internet : www.blackmer.com